



Espresso

June 2020

ISSN:2463-560X



Rural Women
NEW ZEALAND

Ngā Wāhine Taiwhenua o Aotearoa

NATIONAL OFFICE UPDATE

All National Office staff worked from their homes until we reached Level 2. Over the last two weeks, we have been on rotation so only three staff members have been in the Office at a time. From next week the Office will return to a more normal standing and most staff will be there during the week. While we have kept in touch with our daily zoom meeting, we look forward to a day in the not too distant future when all six of us will be together again – especially as Linda has promised us lunch to celebrate her birthday.

Fortunately, we have, for the most part, been able to do our jobs from home. In the big shuffle of things, many planned meetings and events have fallen away. However, new projects and opportunities have arisen to fill the gaps. We have continued to work on RWNZ business including planning for our Summit, preparing to launch the Business Awards, policy development, administration and accounts, preparing for this year's end of year reporting, submission writing and plenty of meetings via zoom.

Our changing circumstances have helped us develop new relationships and think about how we can enable participation and communication by Members. Recently, office staff have been helping Area Committees meet together via zoom. Please let us know if we can assist you too. We are also looking towards the Summit and how we might hold an AGM in these interesting times. Our first and best option is to meet in Wellington as planned but we are considering as to how we could still meet using technology. As they say, necessity is the mother of invention.

Lastly, thank you for the kind and supportive messages you have sent us over the last two months. It is always good to hear from you.





AUSTRALIAN BUSHFIRE RELIEF

The funds raised by Rural Women New Zealand through our Australian Bush Fires Fundraising Appeal have been sent to Country Women's Association of Australia's chosen recipient, BlazeAid.

Since the bush fires, many rural communities, including many of CWAA's Members, have been further affected by extreme droughts and most recently, COVID-19. As a result, CWAA asked that RWNZ send the funds raised directly to BlazeAid which is a volunteer-based organisation that works with families and individuals across rural Australia after natural disasters and rebuilds fences and other structures that have been damaged or destroyed in the bush fires.

RWNZ has received a message from Debbie Buttler on behalf of BlazeAid truly thanking us for our wonderful donation of \$11,610.90. It is heartening to know that these funds will help rural communities at a grassroots level. Thank you to everyone who made this significant contribution possible.

PHOTOS © Monique Satchell



Knitting needles to the ready...

WOOLON 2021 ENTRIES ARE OPEN!

WoolOn Creative Fashion event is one of New Zealand's iconic fashion events, encouraging both new and experienced designers to create visual, wearable pieces using New Zealand's most sustainable wool fibres.

Based in gorgeous Central Otago, WoolOn aims to showcase and develop wool design and artistry in New Zealand. Young designers, experienced designers and master-crafters are invited to challenge themselves on a stage where their creativity is encouraged and celebrated.

WoolOn 2021 features new categories and awards including the Mata-Au Award for the entry that best "reflects and showcases our culture" across all categories.

Changes to entry criteria allows more flexibility for designers, with the definition of wool fibre being expanded for the first time to include alpaca, cashmere, angora goat and mohair, along with the traditional sheep. Entries will also no longer have to be created within 12 months of the WoolOn event as long as it has never been entered into another event or competition.

Entries for WoolOn 2021 open from 4 May 2020 and close 3 May 2021 and will be available on the WoolOn website www.woolon.co.nz or by emailing entries@woolon.co.nz



PHOTO - Lisa Davidson Photography.
Featured design 'A Touch of Copper' by Viv Tamlyn

— MEMBERS' ACTIVITIES DURING LOCKDOWN —



Above from left: ANZAC commemorations at Jeanette McIntyre's place in Gore; Bev Corey placed flowers at the Rai Valley Memorial on ANZAC Day; Poppies at the Kilsbys' near Levin; Below: Hot cross buns for Easter at Shirley Read's house, and at Fiona Gower's home.



NZI RURAL WOMEN NZ BUSINESS AWARDS

This year's NZI Rural Women NZ Business Awards will launch this week. Many of our previous Award winners have featured in the media recently. Kim Tatham, our Excellence in Rural Health and Wellbeing winner was in both print and on a podcast. Innovation Award winner Sharlene Barnes was on TV promoting Skool Loop and Hannah O'Brien of Hunt & Gather featured in a recent episode of Country Calendar. We asked Kim and our Rural Champion Kate Taylor, about their Awards experience and more recently, how they have fared in the last two months.



Kate at the Awards in November

Kate Taylor - Rural Champion Award Winner

I was thrilled and proud to have won the Rural Champion Award. Listening to the other category winners and seeing their videos was amazing. I loved meeting and connecting with my award sponsors, Jarden. My business has continued to evolve; 2019 was a watershed year for me with the publication of the Young Farmer of the Year book and I have also retired from the Ballance Farm Environment Awards after 10 years. I am concentrating on building the personal memoirs side of my business (although I wish I had done some interviews before lockdown!) It's important to record people's memories and stories while they are still 'young' and healthy. No regrets!

Having been self-employed for 20 years, it is intriguing to hear people's working-from-home issues. But my biggest COVID-19 challenge was working at the World Hereford Conference in Queenstown (now known as a cluster) and helping NZ Herefords deal with the media storm that ensued.

Kim Tatham - Excellence in Rural Health & Wellbeing Winner

Since winning the inaugural Rural Health and Wellbeing Excellence Awards last year, Kim Tatham's small, rural dental practice, Piopio Dental, continued to flourish. However, the arrival of COVID-19 has played havoc with many businesses and Kim's is one of those. She has spent Level 4 lockdown with her family on their farm.

Kim was disappointed that although the government classified dentistry as an essential service under Levels 4 and 3, it was classified as Essential Service Non-Health. Obtaining appropriate PPE during the lockdown period was also extremely difficult, with significant cost increases.

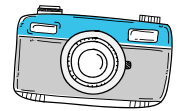
When the announcement was made that New Zealand was moving to Level 3, Kim talked to each of her 80 patients who had scheduled appointments and referred those that needed urgent care to larger practices who could fulfill Ministry guidelines during Levels 3 and 4.

She was able to provide telehealth services to her patients and prescriptions for pain relief and antibiotics only. Fortunately, there were only four patients during this time that needed to be referred to larger clinics during Levels 3 and 4.

Like many business owners returning to their work, Kim is concerned about the long term impact on the practice. She has had a very long list of patients to call and triage and re-opened as soon as she could. As the re-opening of schools did not coincide with the reopening of businesses, Kim, like many other parents, also had to organise childcare for her children during clinic hours. This is always an issue for working mums (and dads) and particularly so for those in rural communities.



PHOTOGRAPHY COMPETITION ENTRIES



Above from Wendy at Onetangi, Waikeke Island, (left) "A Beautiful Warning on the Dawn of Lockdown" and (right) "My front garden at Onetangi".

Below from Janice in Oamaru.

"This photo was taken on the bridge by my driveway, looking up towards my house. It is my favourite view, especially with the autumn colours."



HOW TO...

TELL A DASH FROM A PINCH

If you have ruined a recipe because you added a 'pinch' instead of a 'dash' of something to the ingredients, here is a handy list of measurements you do not usually get in conversion tables.

1 dash = 8 drops

1 pinch = $\frac{1}{8}$ teaspoon

1 knob = 1 teaspoon

1 dot = $\frac{1}{2}$ teaspoon

1 splash = 1 tablespoon

1 dollop = 1 tablespoon

1 lacing = 1 tablespoon per cup

1 lemon = 2 tablespoons juice + 2 teaspoons rind

1 garlic clove = $\frac{1}{8}$ teaspoon powdered garlic

450g bread = 12-16 slices

450g whole apples = 2 cups pared and sliced

coating (usually flour) = a thin film

dredging (usually flour) = a heavy coating

dusting (usually flour) = a light sprinkling

Compiled by Waipa Provincial Women's Division
Federated Farmers of New Zealand (Inc.)

Recipes submitted by members from W.D.F.F. Branches throughout NZ