



NZI RURAL WOMEN NZ BUSINESS AWARDS 2019



The 2019 NZI Rural Women NZ Business Awards were held in Wellington on Friday, 22 November. It was an incredible evening during which we celebrated the entrepreneurship and achievements of our seven Category Award Winners.

We were pleased and grateful to be hosted by the Hon. Damien O'Connor, Minister of Agriculture and Minister for Biosecurity, Food Safety and Rural Communities, who also presented the Love of the Land Award on behalf of the Ministry for Primary Industries. The evening was overseen by RWNZ Chief Executive, Liz Pennington as 150 seated guests enjoyed an excellent meal in the Banquet Hall.

Each Award Category Winner and Sponsor was recognised and celebrated over the course of the evening. It was wonderful to see each winner's video and learn a little more about their businesses.

The excitement in the room built towards to the announcement of the Supreme Award Winner which was chosen from the seven Category Award Winners. The Supreme Award was presented by Christina Chellew on behalf of our Premier Partner NZI. Christina, who had also been a judge for this year's Awards, congratulated the very worthy finalists before announcing the Supreme Award Winner, AgriSea. The Award was received by Clare Bradley.

Rural Women New Zealand thanks all our deserving Award Winners and our Sponsors without whom these Awards would not be possible.

And the Awards go to...

SUPREME AWARD

sponsored by NZI

AgriSea New Zealand Limited

Clare Bradley, Region 5

CREATIVE ARTS

sponsored by ShearWarmth Wool Blankets

Whistle & Pop

Bex Hayman, Region 1

EMERGING BUSINESS

sponsored by ANZ

By The Horns

Amanda King, Region 2

INNOVATION

sponsored by Hynds Pipe Systems

Advert Media for the Skool Loop App

Sharlene Barnes, Region 3

LOVE OF THE LAND

sponsored by Ministry for Primary Industries

AgriSea New Zealand Limited

Clare Bradley, Region 5

RURAL CHAMPION

sponsored by Jarden

communiKate

Kate Taylor, Region 4

BOUNTFUL TABLE

sponsored by Massey University

The Clareville Bakery

Rose Kloeg, Region 4

RURAL HEALTH AND WELLBEING EXCELLENCE

sponsored by Access Community Health

Piopio Dental

Kim Tatham, Region 6 Greater Waikato



Editorial

Kia ora tātou

As we come to the end of another busy year, we have the opportunity to reflect on all that has happened during it. There have certainly been big challenges for our rural communities. We have had droughts and fires, storms and flooding, and the uncertainty created by efforts to address climate change, greenhouse gas emissions and protect and ensure our freshwater.

RWNZ has been there through it all with support on the ground where needed, and has been a strong, balanced voice on many issues throughout the year. I would like to take this opportunity to say a big thank you for all the incredibly hard work undertaken this year in so many ways. The Statement of Service Performance required by the Charities Commission is a tangible record of all that work. I encourage you all to share what you do, not only because it is a legal requirement for our charitable status, but so we can celebrate what we do. Responses to surveys to Members have meant we have been able to present strong submissions throughout the year which reflect our views as women living and working in the rural sector. We have our own opinions on issues and as influencers, we should not be afraid to voice them.

There have been some real highlights for me this year and attending the Associated Country Women of the World Triennial Conference in Melbourne was definitely one. RWNZ was well represented and being able to show the “She Shears” movie to the delegates was fantastic. Travelling to Whangarei for National Conference and experiencing warm northern hospitality was also excellent. The amazing talent showcased at this event was really inspirational. Thanks to the dedicated Organising Committee for fulfilling their goal of sharing a “A Taste of Northland – Food, Land and People.” From National Conference, I went straight to National Fielddays at Mystery Creek. It was very tiring and, as always, so much fun. The RWNZ wall of wonder women was a real drawcard and highlighted who our rural women are - we certainly are a diverse and multi-talented group.

The NZI Rural Women NZ Business Awards again showcased the excellence and entrepreneurship of our rural women.

We were privileged to celebrate another group of amazing women this year. Thank you to our Awards Partners, especially NZI, for their constant support for RWNZ. Those who attended the Summit and Business Awards would have had the opportunity to experience and see how we value our growing and developing partnerships.

Speaking of the Summit, what a great few days we had in Wellington where we had the opportunity to learn new skills, advance and discuss policy issues, celebrate both the Business Awards and our own National Award winners and take part in the AGM. Thanks to everyone who attended and for your input in the workshops and the good company we shared.

Congratulations to all our Members who have been recognised for their community work this year. Each of these celebrations is important as it recognises the hard work that Members do to keep their rural communities strong. We also celebrated being a finalist in the Massey University Defining Excellence Awards which recognised the long standing partnership we have with Massey which continues to be hugely significant. Another moment of celebration lies in recognising that it is 20 years since WDFW became RWNZ and how much we have achieved in that time.

With 2020 on the horizon, there is plenty to look forward to within RWNZ. I have enjoyed meeting Members at all kinds of meetings, functions and events throughout the year. Thank you for letting me share your events and I look forward to working with you again over the upcoming year.

Lastly, thank you for all you do, thanks to the Board and Leadership Team for all your work, and a special thanks to the National Office Team who are so supportive of us and work hard to help make RWNZ the special organisation it is.

Have a wonderful and safe festive season.

Ngā mihi,

Fiona Gower
National President

NATIONAL BOARD OF RWNZ

National President International Portfolio

Fiona Gower
Tuakau
Ph: 09 232 9711
Mobile: 027 428 3884
fiona.gower@ruralwomennz.nz

National Finance Chair Business Portfolio

Jenny McDonald
Ashburton
Ph: 03 303 3196
jenny.mcdonald@ruralwomennz.nz

National Chair Education Portfolio

Penny Mudford
Wellington
Mobile: 027 246 1936
penny.mudford@ruralwomennz.nz

Board Member (North Island) Technology Portfolio

Zelda de Villiers
Ruawai
Mobile: 021 221 6670
zelda.devilliers@ruralwomennz.nz

Board Member (South Island) Environment & Land Use Portfolio

Gill Naylor
Alexandra
Mobile: 027 338 3089
gill.naylor@ruralwomennz.nz

Board Member (South Island) Social Portfolio

Sharron Davie-Martin
Rangiora
Mobile: 027 475 4129
sharron.daviemartin@ruralwomennz.nz

NATIONAL OFFICE

Ph: 04 473 5524
0800 256 467
PO Box 12-021
Wellington 6144
enquiries@ruralwomennz.nz

Chief Executive Health Portfolio

Liz Pennington
ce@ruralwomennz.nz

Manager: Government, Public Sector and Academic Relationships

Angela McLeod
angela.mcleod@ruralwomennz.nz

Office Manager

Felicity Bunny
felicity.bunny@ruralwomennz.nz

Accounts Manager

Linda Tunley
linda.tunley@ruralwomennz.nz

Projects and Events Manager

Lisa Thompson
lisa.thompson@ruralwomennz.nz

Assistant to the RWNZ Board and Chief Executive

Maree Myers
maree.myers@ruralwomennz.nz

Dates for the Diary

Friday, 20 December: National Office closes for 2019

Wednesday, 25 December: Christmas Day

Thursday, 26 December: Boxing Day

JANUARY

Wednesday, 1 January: New Year's Day

Thursday, 2 January: New Year's public holiday (observed)

Monday, 6 January: National Office opens for 2020

Monday, 20 January: Wellington Anniversary Day (National Office closed)

Thursday, 23 January: 40 over 400 World Women's Shearing Record event, Turangi

FEBRUARY

Thursday, 6 February: Waitangi Day holiday

MARCH

Thursday, 4 - Saturday, 6 March: The Golden Shears, Masterton

APRIL

Saturday, 4 April: Region 6 Greater Waikato Regional Conference, Morrinsville

Thursday, 9 - Monday, 13 April: Royal Easter Show, Auckland

Friday, 24 - Sunday, 26 April: Triple F Challenge, Cromwell

MAY

Monday, 25 - Tuesday, 26 May: Region 1 Conference, Invercargill

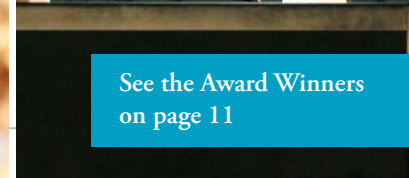
Welcome to New Members

- Vicki Rout
- Heather Carr
- Lorraine Hutt
- Barbie Merrylees
- Sarah Baldwin
- Annabel Barnett
- Melita Farley
- Luciana Almeida
- Lyn Watson
- Amanda Clayton
- Jackie Benschop
- Kaeli Bunt
- Vera Vuglar
- Essie Colville
- Pam Grover
- Kate Lattey
- Pam Rye
- Hazel Gibbs
- Pam Porter
- Erika Fox
- Rachel McDonald
- Bronwyn Tamis
- Abby Strange
- K Westerna
- Amanda Miller
- Lyn Duncan
- Alison Ferris
- Sharlene Barnes
- Francesca Bonventre
- Clare Bradley
- Bex Hayman
- Hilde Hoven
- Amanda King
- Rose Kloeg
- Andrea Rowe
- Kim Tatham
- Rachel Whalley
- Tracey McCallum
- Gemma Adams
- Kristy McGregor



NZI RURAL WOMEN NZ BUSINESS AWARDS 2019





RWNZ SUMMIT REPORT



As it has previously, the Summit comprised of three parts: Business and Policy Workshops, the NZI Rural Women NZ Business Awards and the RWNZ Business Session. It was a very busy and inspiring two days across three different venues.

FRIDAY

We were delighted to be joined by Gail Commens, South Pacific Area President for ACWW and the Equal Employment Opportunities Commissioner, Saunoamaali'i Dr Karanina Sumeo for the Friday workshops.

Friday morning began with our Premier Partner, NZI, presenting an excellent business skills session for attendees. The topics covered were Managing Business Risk and How Social Media can Work for Your Business. Both topics were well considered and received, and the presenters did a fantastic job of demystifying these sometimes incredibly confusing subjects. Thank you to the presenters Jane Dunningham, Manager Risk and Assurance at IAG, and Matt Pryor, Digital Engagement Manager at IAG for their great work. This wonderful session was another example of our partnership with NZI in action.

After lunch, we reconvened for our RWNZ Policy Workshops. After a brief review of the Business, Technology and International Portfolios, attendees were invited to take part in their choice of a more in depth workshop on either our Education, Health and Social, or Environment Portfolios. These three topics had been identified as being of most interest to Members in a survey conducted earlier in the year and each has certainly received much publicity in recent months.

We knew there would be a great deal of interest in the Environment Portfolio Workshop. The issues of carbon emissions and freshwater have been subjects of much debate and concern for New Zealanders. This session was facilitated by National President, Fiona Gower, and Environment Portfolio Convenor, Gill Naylor. Our guest speakers were from the Ministry for Primary Industries and the Ministry for the Environment. We recorded this Workshop and it can be viewed via the RWNZ website.

The Health and Social Portfolio workshop was facilitated by National Chair, Penny Mudford. There are a number of rural health issues which have been the subject of intense public scrutiny this year. This workshop considered four topics. The first of these looked at the current situation regarding M Bovis and the Ministry for Primary Industries response to the crisis. Thank you to Debbie Parker from MPI who spoke to the attendees on this topic. Bridie Foster, a midwife from the College of Midwives, provided an update on concerns surrounding rural maternal health including the closure of maternity services in parts of the country, funding and resourcing of rural health services and the ongoing pressure and undervaluing of rural midwives.

It was a pleasure to welcome Pat Macaulay from Region 1 who spoke about her Region's support and fundraising for the Women's Health Bus. This wonderful initiative is already making a huge difference in accessibility to health care for



Opposite page, from left: Members during a small group breakout session during the Managing Business Risk topic; Matt Pryor, Digital Engagement Manager at IAG, describes how to make social media work for us. This page, from left: Environment Workshop, Health & Social Workshop.

rural women and it was a great opportunity to celebrate the work done by Region 1 in bringing the project to fruition.

Liz Pennington, our CE, led a discussion around rural mental wellbeing and resilience for the last part of this workshop. There was considerable interest in this as providing support to those struggling in rural communities lies right at the heart of RWNZ as an organisation. Liz outlined a number of ways in which Members currently provide and support resilience in their communities and she also introduced ways in which RWNZ may be able to extend that work and how this could be achieved.

The Education workshop was tasked with considering the wellbeing of our rural schools. This session was facilitated by outgoing Education Convenor, Sue Higgins, who welcomed our guest speakers from Kumeroa School: Principal Caroline Transom, and Steff Cresswell who is Chair of the Board of Trustees. It was extremely informative to have Caroline and Steff's input as their on the ground experience gave context to the challenges rural schools face.

The workshops led into a plenary session in which outcomes of each were discussed by the larger group. These outcomes help to provide and define RWNZ's policies and submissions on these issues.

The last session of the day provided an opportunity for discussion of the concept of "Adopt an Aunty." This concept

has grown out of the partnership between RWNZ and the Ministry for Primary Industries this year. The concept behind Adopt an Aunty also has its roots in the founding work of RWNZ nearly a century ago. This project seeks to provide support and resources which could help RWNZ 'Aunties' in this work. We were pleased to welcome Cathy Robinson and Terri Anderson from MPI who joined us for this session.

After introducing the concept, Angela McLeod presented the results of a Member's survey which had ascertained what types of tasks were already being undertaken around the country by RWNZ Members. The range and variety of and extent of this work was hugely impressive and a testament to the variety of efforts by RWNZ Members nationwide.

The next stage for this project is to develop a pilot programme which will add some structure and offer more support to Members and Branches who have an interest in this project. Yvonne Tweedie and Ann Irving from Region 1 provided some very useful feedback on the proposal as they had given thought to how this may develop. A Working Group has been established to advance the Adopt an Aunty project. If you would like more information about the Adopt an Aunty concept please contact the National Office.

The Business and Policy Workshops were closed at 4.30pm so that attendees could make their way to Parliament Buildings for the NZI Rural Women NZ Business Awards 2019.

RWNZ SUMMIT REPORT *continued...*



SATURDAY

Rural Women New Zealand returned to the Grand Hall in Parliament Buildings on Saturday morning for our Annual Business Session. We were privileged to be joined by Minister for Women, the Hon. Julie Anne Genter, Deputy Mayor of Wellington, Sarah Free and South Pacific Area President for ACWW, Gail Commens for our Opening Ceremony. A letter from Prime Minister Jacinda Ardern was also read to the meeting.

Minister Genter left us after her speech to fulfill other commitments. However, we were honoured that Sarah Free and Gail Commens were able to present the RWNZ National Awards for 2019.

The Member of Excellence Award and the Olive Craig Tray were awarded jointly to Margaret Vickers (Region 6 Taranaki) and Ruth Parker (Region 3) who will hold the trophy for 6 months each. Ruth was unable to be at the Meeting so Melva Robb received the Award on her behalf.

A National Service Award was presented to Carolyn McLellan (Region 3) acknowledging her contributions to RWNZ. Carolyn had sent her apologies as she was unable to attend the Meeting and Melva Robb accepted the Award on Carolyn's behalf.

The attendees then celebrated the announcement of Awards for this year's Reports.

- The Talbot Trophy for the Best International Officer's Report was awarded to Helen Bayliss from Region 6 Taranaki. Helen's Award was accepted on her behalf by Shirley Read.
- The Lady Blundell Tray was presented to Melva Robb, who received it on behalf of Marlborough Provincial for their 101 Ways with Wool project.
- The Honora O'Neill Trophy for the Best Provincial Report was awarded to Sue Hall (Region 6 Greater Waikato) and accepted on her behalf by Liz Morgan.

- The Best Branch President's Report was awarded to Margaret Smiley from Forest Reserve Branch in Region 7. Margaret was unable to be at the Meeting and the Award was accepted by Pauline Hilliam-Olsen on her behalf.

The Annual General Meeting was then called to order by National Chair Penny Mudford who welcomed Members and introduced the Board Members, the National Office staff and Sharlene Stokes, RWNZ's Returning Officer. The Meeting moved through the formalities and then considered the Annual Reports which had been provided to Members in October in advance of the meeting.

There was an opportunity for questions on each of the Reports. In terms of the Finance Report, we were privileged to welcome Angus Marks and Andrew Austin from Jarden, the investment company which manages RWNZ's portfolio. Jarden has now been managing RWNZ's funds for just over a year and Andrew was able to outline how the RWNZ portfolio was performing, the strategy behind the investment types and a description of the state of the overall market.

After adoption of the Executive, Finance, Leadership Team and Board Portfolio Reports, the Chair invited Gail Commens to introduce and call for Pennies for Friendship.

After lunch, the Meeting resumed to consider the eight Remits presented in 2019. The following Remits were adopted:

- THAT Rural Women New Zealand Inc. hold a National AGM and Workshops on every even numbered calendar year and that on every odd numbered calendar year a combined AGM and Conference be held and hosted in different regions.
- THAT Rural Women New Zealand Inc. pursue with the Minister of Education the raising of the Boarding Allowance to \$8000 then annually in line with inflation.
- THAT Rural Women New Zealand Inc. commends the Minister of Health for establishing the Health and



Disability Systems Review and seeks major restructuring to establish no more than six future regional funding and delivery structures to replace the current 20 District Health Boards.

- THAT Rural Women New Zealand Inc. urges the Government to provide funding and practical professional support and/or counselling services to rural schools and Principals to ensure the wellbeing of students, staff and families.
- THAT Rural Women New Zealand Inc. urge the Government to provide free or at the very least, affordable, counselling services to rural communities.
- THAT Rural Women New Zealand Inc. urge the Government to apply their Rural Proofing Guidelines to the decision making on environmental issues to ensure that all rural voices are included.
- THAT Rural Women New Zealand Inc. urge the Government to ensure Cabinet, all Ministries and

Departments to utilise the new Gender Analysis Tool provided by Ministry for Women, 'Bringing Gender In' alongside the Rural Proofing Guidelines provided by the Ministry for Primary Industries to ensure the intersectionality of being women and living in rural New Zealand are taken in to account in policy and law-making.

The final order of business for the day was to farewell retiring Board Member Sue Higgins and welcome incoming Board Member, Sharron Davie-Martin. As Liz read the citation, Fiona presented Sue with her National Member of Honour badge, a beautiful Suffragette pin and flowers. There were a number of misty eyes in the room.

The National President advised the meeting that the Board was looking forward to welcoming Sharron who would bring a wealth of experience to the Board in the new year.

The Meeting closed with a waiata led by the Chief Executive and warm wishes of safe travels to those present.



From left: Wellington Deputy Mayor Sarah Free, Liz Morgan, Shirley Read, Fiona Gower, Margaret Vickers, ACWW South Pacific President Gail Commens, Melva Robb and Pauline Hilliam-Olsen

Farewelling...

SUE HIGGINS, RETIRING SOUTH ISLAND BOARD MEMBER

Sue Higgins joined Rural Women New Zealand in 2008. She is actively involved in the administration and governance of her family-owned farming and contracting businesses. Having grown up in rural Nelson, Sue has always had a heart for the community. She was a member of several voluntary organisations from a young age which included seven years as a volunteer for the Nelson Regional Hospice whilst raising her three children.

Participating in the RWNZ Wellington Experience in 2009 followed by the Masterclass 2010 exposed Sue to the power of RWNZ as a 'voice' for the community. These together with experience gained from attending the Institute of Directors, Company Directors Course 2009 this set Sue on her governance journey.

While studying for her Bachelor of Business Degree Sue was secretary for the Top of the South Rural Support Trust and a student member for the Open Polytechnic of New Zealand. From 2011-2013 she was a director for Access Homehealth Ltd.

Sue completed the Kellogg Rural Leadership Programme in 2012 which culminated in the presentation of her project to the Primary Production Caucus at Parliament.

Over the years Sue has attended many conferences and helped run the 2015 RWNZ National Conference held in Nelson.

Locally, Sue facilitated an RWNZ Leadership weekend at St Arnaud, organised a community farmer meeting for contentious current events of the time and a wellbeing event for farmers. Using her personal networks Sue has organised successful community Christmas functions raising money for national charities.

Sue is an executive member of the Nelson Provincial Federated Farmers and Nelson Rural Advisory Group. She is a past member of the Nelson Tasman Chamber of Commerce Waimea Community Group.

Since election to the Rural Women New Zealand National Board in 2016, Sue has held the Education Portfolio and attended the Rural Education Reference Group Committee meetings. She has chaired the Education Bursaries



Sue Higgins (centre) with the RWNZ National Board (from left) Jenny McDonald, Zelda de Villiers, Penny Mudford, Gill Naylor, Fiona Gower.

Committee and during 2019, Sue has also acted as the chair of the Committee for Audit, Risk and Finance Committee (CARF).

As a member of the inaugural Board following the governance restructure of Rural Women NZ, Sue has been instrumental in instilling a positive organisational culture focussed on supporting our rural communities. She has advocated strongly with Government on education issues. And, she has kept discussions on leadership at the forefront of the Board's agenda ensuring priority is given to growing our leaders within Rural Women NZ with the reintroduction next year of our Leadership Development Programme. Locally, Sue has organised community lunches in conjunction with Rural Support Trust, Federated Farmers, Nelson District Health Board and Beef + Lamb NZ.

Although Sue is standing down from the Rural Women NZ (RWNZ) Executive she remains active in her local community. She plans to continue her passion for the rural sector and its people by promoting RWNZ's ability to represent and influence rural needs in Parliament, by organising community events and enabling others to grow into leadership, but most of all she plans to spend more time with her grandchildren to instill traditional rural values into their lives.

Introducing...

SHARRON DAVIE-MARTIN, INCOMING SOUTH ISLAND BOARD MEMBER



I grew up in Auckland working in retail administration until I met my dairy farming husband. We share-milked in and around Northland with our three daughters. In 1993 we purchased a small dairy farm in Warkworth, north of Auckland that belonged to my husband's family.

With our oldest daughter we built a Day Spa in Auckland which I managed.

After 12 years the farm was sold for urban development and we purchased our current farm in North Canterbury. Our farming career has gone from strength to strength and we enjoy putting back into our community via mentoring and sharing information while gaining knowledge.

We have recently moved to a lifestyle block to make our house available for staff but remain active in the farm running.

We have been fortunate to receive several awards for our business over recent years including the Trans-Tasman Dairy Business of the year which we are particularly proud of. I received the Dairy Women's Network Community Leadership Award.

I am involved in several community groups centered on rural people. My special interest is assisting immigrants to settle into their working environment and local area.

I have been involved with Rural Women New Zealand for about 14 years and have chaired our local Branch for 10 years. I have been a Member of the Region 2 Area Management Committee for about 5 years and have been Leadership Councillor for a little over a year. I am on the Scotlands Te Kiteroa and Adverse Events Funding Committees and am the Treasurer of Rural Women Canterbury Charitable Fund.

My spare time is spent with family and travelling.

NZI RURAL WOMEN NZ BUSINESS AWARDS 2019 WINNERS



Top, from left: Bountiful Table Award Winner Rose Kloeg with Claire Massey from Massey University; Supreme Award Winner Clare Bradley with Christina Chellew from IAG/NZI. Emerging Business Award Winner Amanda King with Andrea McDonough from ANZ; Rural Health and Wellbeing Excellence Award Winner Kim Tatham with Androulla Kotrotsos from Access Community Health. Bottom, from left: Rural Champion Kate Taylor with Angus Marks of Jarden; Creative Arts Award Winner Bex Hayman with National President Fiona Gower on behalf of ShearWarmth; Innovation Award Winner Sharlene Barnes with Katrina Winn from Hynds; Love of the Land Award Winner Clare Bradley with Hon. Damien O'Connor.

NATIONAL AWARD WINNERS

Olive Craig Member of Excellence Award

CITATION FOR **MARGARET VICKERS**

It gives me much pleasure to write this Letter of Reference in support of Margaret's C.V. for consideration of an Olive Craig Member of Excellence Award.

I have known Margaret for more than 60 years. I was President of our Midhirst Rural Women Branch when she became a Member in December 1968. It took Margaret a while to get her bearings in our Branch of 70-plus Members, but once she became involved she never looked back and became a loyal, dedicated Member to all our ideals of service.

Margaret's C.V. speaks for itself.

I was privileged to write the citations when she was accorded Branch and Provincial Honours by Rural Women, so I am very well aware of the service she has given to not only our organisation but to the wider Stratford Community through concepts she initiated and led the way. Margaret puts herself 'on the line' to make sure everything she does is thought out and actioned in the appropriate manner.

She is a talented floral artist whose beautiful arrangements have, for many years, adorned Rural Women celebrations and graced many, many Civic functions in Stratford.

Margaret has recently been presented the 2019 Stratford District Council Outstanding Citizen Award.

Margaret is a very worthy recipient of the Olive Craig Member of Excellence Award.

- Citation written by Ruth Keller



Margaret receiving her Award from Gail Commens and Deputy Mayor Sarah Free

CITATION FOR **RUTH PARKER**

Managing money seems to be Ruth's forte having worked in a bank before she was married, when she joined WDFW/ Rural Women New Zealand she held the position of Treasurer for many many years. The Clarence Bridge Branch was formed in 1935, Ruth joined the Branch and was soon given the Treasurer job, a position she held until 1984 then again from 1970 -1988 until Ruth retired and shifted to Blenheim. Ruth was given a Branch Bar of Honour in 1984 for her service. Then in 1972 Ruth was given a plant for recognition for service she had given over the years for the Clarence Bridge Branch of WDFW. Ruth also held two positions as Vice President for 1986-89, and became a Home Care Advisor in 1987.

Ruth was also recognised for her service to the blind in March 1984 when she was presented with a certificate for 20 years of service.

Joining the Blenheim Branch 30 years ago, Ruth became their Treasurer - a position that Ruth held even after the Blenheim Branch amalgamated with the Wairau Valley Branch in 2008, Ruth continued to do the Treasurer work for the first year.

While being Blenheim's Branch Treasurer, Ruth also became the Marlborough Provincial Treasurer from 1985-1998. Ruth's accurate figures and ability to manage money put the Marlborough Provincial funds in a good healthy position when she stepped down from being the Treasurer.

The Marlborough Provincial RWNZ had a hostel called Stockport House which was for young rural adults leaving school before going flatting. Ruth took her turn on the Stockport House Committee taking on the position of Treasurer and could be found in her parlour counting out the money as donations and fundraising flowed in, so the building could be re roofed, and then other alterations were made to improve the hostel. Ruth worked very hard for Stockport House and was often called on to go down and sort out problems in later years, at times dealing with some very difficult situations late at night. Ruth's ability to stay calm under pressure helped to defuse the situation very quickly.

Ruth is a great supporter of Provincial activities and can

always be relied on to help. When Members catered at the sale yards Ruth always volunteered to help. Ruth's willingness to help rubbed off on people and her great sense of humour, cheerful smile and pleasant manner, encouraged people to step forward to buy raffle tickets or hear what she had to say, this helped when WDFFF had promotional sites at A&P Shows or displays in malls where she would help give out information, balloons to children or by selling raffle tickets.

Ruth has knitted many many all wool baby singlets and is still knitting them to this day.

Two years ago after the Marlborough Provincial RWNZ had sent school equipment to Vanuatu for a little school that was started, Ruth saw a picture of the children having to sit on broken up shells on the floor, Ruth decided to sew each child a cushion to sit on. The report back was that they were much loved by the children who sat or slept on them as they were all bright and colourful.

Ruth handled the collecting of the National raffle butts and money in 2008 ensuring they were all in order for the drawing. At the same time worked with the committee to help organise the National Conference in Blenheim.

Another supportive suggestion from Ruth was the offer of her daughter & son-in-law's Charlie Wiffen's wine for a fundraiser for the Marlborough Provincial, when hosting the National Rural Women NZ Conference in 2008. Their wine proved very popular and was a most successful fundraiser.

Ruth was awarded a Marlborough Provincial Bar of Honour in 1997 and then was awarded a Marlborough Provincial Life Membership 2010 for all her years of service.

Ruth is in her nineties but is still willing to sit and sell raffle tickets at supermarkets or at other fundraisers plus continue to knit baby singlets, as part of her service to the Marlborough RWNZ. Members all believe that Ruth is a very worthy recipient for a National Member of Excellence Award.

- Citation submitted by Melva Robb, Region 3

National Service Award

CITATION FOR **CAROLYN MCLELLAN** QSM

Carolyn McLellan joined the Bainham Branch of Women's Division Federated Farmers in 1969.

Carolyn was made Branch President in 1981, then again in 2002, once again she was elected President in 2004- 2009 and was then re-elected again in 2015, a position she still holds to this day.

Bainham is a very go-ahead Branch and is very generous with donations to local causes and this is helped by great leadership from Carolyn.

Carolyn became Golden Bay Provincial President in 2016 (a position that she still holds) which is when she started attending the Area Committee meetings. She has been attending these for the last three years.

Carolyn attended a two day Leadership course in Wellington in 2018.

Carolyn has attended many different Regional and National Conferences and she is missed if she does not make it. Golden Bay hosted the last Region Three Conference this year and Carolyn was one of the many willing helpers who made it a success.

This year Carolyn was asked by National Office if she would be on the Remits Committee which she accepted.

Carolyn has worked very hard for Golden Bay and has been on the Golden Bay Community Committee for fifteen years and was Chairperson for quite a bit of the time. In this time she did a lot to get the new medical centre up and running, Carolyn is also on the Collingwood Health Clinic Committee.

Both Bainham Branch and Golden Bay would not be as active if Carolyn was not there leading from the front and working as hard as she does.

We all believe that Carolyn McLellan is a very worthy recipient of a National Service Award for all the years of service she has devoted to WDFFF and Rural Women New Zealand.

Branch News

CASTLEDOWNS WETLANDS PROJECT

A Good Day in the Wetland



Ten brave persons headed off to the Wetland despite the indifferent forecast and found it was still and sunny in the shelter of all the vegetation.

The downstream circuit has now been connected, and some of it tidied up, the tracks have been tidied up and the upstream track that had reached up to the poplar trees has now had a route, needs some work, cut across to the stream. Thank you to all the volunteers who helped with the weeding and all the other work. The afternoon ended with all of us pretty exhausted and needing to be horizontal for a while with a cold drink in hand.

Anne McDermott, the President of the Southland Tramping Club, is a real eco warrior and has a large arsenal of tools that she takes pest busting, and track clearing. She has a bum bag and in the bag she has snacks and she hangs a slasher and a small folding saw in a pouch off the belt. She also takes leather gloves, prunners, a pocket knife, safety glasses and wet weather gear. Anne removed two rats from the traps as well. Thanks Anne for your help.

- Thank you to Ann Irving for this article and photo.

CLIFDEN BRANCH

Cryptic Car Trail for International Women's Day



On October 15th Clifden Rural Women celebrated International Rural Women's Day by hosting a cryptic car trail starting from the former Otautau Methodist Church.

Finding the church gave the first clue – the church now being the Otautau Art Gallery. Finding answers to each question, new clues then lead us on to the next stop - the historical Clifden Suspension Bridge, answers were eagerly sourced, as we learnt when the bridge was built, the legend about the Maori Girl Leap, and what the early settlers used before the bridge.

From there we travelled to Lillian Loop enjoying a short 30 minute bush walk at the Tuatapere Cemetery, before having lunch at the Waiau Town and Country Club.

In the afternoon we showcased our theme Timber to Tourism through our guest speakers. Val MacKay and Lindsay Faulkner spoke of the sawmills in the area and “walked” us through the township. We learned the importance of the railway for the town from Margaret Thomas, so when the sawmills and railways were closed, Ngarita Dickson told us how the locals got together and petitioned local powers to create a driving route through the town later becoming the Southern Route, now extending from Balclutha to Te Anau. We enjoyed listening to Joyce Kolk, our Queen Service Medal recipient on conservation, stoat trapping and her involvement in the Coast clean-ups - keeping our countryside pristine. Johan Groters showed a PowerPoint display on their tourist ventures, Wairaurahiri Jet and Anita Green from Heli-My-Way showed us transporting kiwis, trampers to the Hump Ridge and coastal cleanups.

Our keynote speaker Cedric Wedderburn spoke about the Hump Ridge, recently declared the 11th newest of NZ's Great Walks. We learned of the history, the present and a future with sustainability in mind. We were all amazed with the beautiful accommodation and provisions available.

About 60 people joined us for the day including Rural Women from all over Southland, Pat Macaulay our National Leadership Counsellor for Region 1 RWNZ and invited Tuatapere senior citizens.

MUHUNOA EAST BRANCH

International Rural Women's Day Luncheon



To celebrate International Rural Women's Day on Sunday the 13th of October, Muhunoa East Branch hosted a country style picnic luncheon. A lovely morning dawned, the sun shone brightly and the weather was calm. The invite had gone out far and wide round Region 4 Members, and the day was hosted at the Woolshed of Pauline Masters in Manakau, between Levin and Otaki. In the true sense of a country day out, Pauline's grand-daughter arrived with her pet lamb, Sid and a neighbour exercised her horses in the woolshed paddock. All Branches in Region 4 were represented with 45 Members taking part including Individual Members which was wonderful.

A refreshing drink was offered on arrival at 11:00AM and a lunch of fancy breads, rolls and wraps with pulled pork, corned beef and Moroccan chicken filling was served with relish and pickle condiments, followed by a cheesecake style dessert. To bring extra life and hilarity to the afternoon's proceedings, the invitees had been asked to prepare a few thoughts on the theme of "When I walked down the road". These were presented as short talks and skits which were hugely entertaining. The best reflection on the theme was delivered by Leonora Spark from Mangamahu Branch.

"Just wanted to write and thank you for the wonderful day you put on yesterday in your woolshed. All of us who attended from Fordell/Mangamahu Branch were very appreciative of all the hard work you and your ladies put in to make it the special day that it was. I believe 45 attended which I think was a testament that people knew it was going to be excellent. The woolshed was decorated to perfection, the food was delicious and the stories that the ladies had to tell were highly entertaining. Once again many, many thanks for a great day." - Lesley Matthews, Secretary, Fordell-Mangamahu Branch.

TURUA BRANCH

Community Donations



Turua Branch recently donated \$260 to the Turua School Garden Group which was used to purchase a seedhouse, garden tools and potting and seeding mix. The boys had quite the challenge in getting the seedhouse erected but got there in the end. The students are now looking forward to eating and cooking their produce. Highlights so far have been the sprouting of tomatoes, cucumbers and beans.

Turua Branch also made a donation to Tamaraki Station Childcare Centre Paeroa for the purchase of car seats for their van. This means that weekly visits to Paeroa Library and Millar Ave School are now possible. The Centre is hoping to expand their range of trips next year to include visit to bush areas and local events such as Calf Club at a rural school.

- Thank you to Lyn Staples for this report.

FRANKLIN DISTRICT

Positive Ageing Expo

For the past 14 years, Franklin District Rural Women have managed a table at the Franklin Positive Ageing Expo. This is an information day which provides details on health and social services available locally. It is a totally free day, even down to the cups of tea and delicious food. This year the Expo was held on Friday, 18 October at the Pukekohe Indian Centre. Our displayed showcased the work done locally and nationally for the rural population and always attracts lots of visitors and good comments.

This year we were honoured to have the event opened by the Hon. Tracey Martin, Minister for Seniors, who spoke about the Government's plans to cope with the expected increased number of older citizens and ways to encourage older people to be active. She visited our display and mentioned the contact she had had with RWNZ in Wellington and paused for a photo with our President and Members who were running the stand.



- Report by Judith Pellow, Franklin District Rural Women .

NZ LANDCARE TRUST | ANNUAL REPORT 2019

NZ Landcare Trust is an independent charitable organisation established in 1996. It is the leading national, non-government organisation working with the land user community to encourage and support sustainable land and water management. The organisation has flourished thanks to its practical, community based approach. Head Office is based in Hamilton but the landcare message extends over a number of regions, thanks to a dedicated team of experienced Regional and Project Coordinators. A key feature of the NZ Landcare Trust is the way it unifies diverse interest groups, including those involved in production, environment and recreation. This is achieved by including representatives from these groups on our Board of Trustees: Federated Farmers of New Zealand, Federated Mountain Clubs, Federation of Maori Authorities, Fish and Game New Zealand, Ecologic Foundation, Royal Forest and Bird Society and Rural Women New Zealand

One of the large internal projects for 2018-2019 year, a new Trust Strategic Plan, which was completed and implemented.

Richard Thompson stood down as a Board Member at the December meeting and he was replaced by the Ecologic Foundation CEO, Guy Salmon. I was elected to the role of Trust Chair.

Trustee and Staff came together for two meetings during the year which included fieldtrips to a number of sites in Manawatu and the Pomahaka River project in Otago which are showing positive changes including good results in sediment and nutrient capture.

The NZLCT and Interim Climate Change Commission ran workshops throughout the country in March, which were well received by participants. NZLCT collaborated with NZ Young Farmers to host a module in the Junior Young Farmer (formally Teen Ag) competition which was based on stream health and identifying macroinvertebrates. A further module was hosted at the Grand Final which further increased the Trust's profile.

With the increased focus currently on freshwater and our environment, NZ Landcare Trust has an increasingly important role to play in this space. There have been some productive discussions with several Ministries to ensure that NZLCT has the capacity and funding to continue to lead this work in our communities.

I am honoured to have the role of Trust Chair in such an important period.

Fiona Gower
Trust Chair

SCOTLAND TE KITEROA COMMUNITY FUND | ANNUAL REPORT 2019

The Fund originated from proceeds of the sales of the Scotlands (Auckland) and Te Kiteroa (Waimate) Rest Homes. Each year interest from the Fund is disbursed to the community.

Eligibility for grants:

The Trust is open to applications from individuals or groups for charitable purposes in the following categories:

- i. The welfare of children and the elderly;
- ii. Community;
- iii. Conservation;
- iv. Education.

The maximum amount that may be applied for for per grant is \$1,500.00 and applications close on 31 December each year.

The Committee met on 4 March by teleconference. Those present were Fiona Gower, National President; Jenny McDonald, National Finance Chair; Marie Appleton,

North Island representative; Wendy Coup, North Island Representative; Gill Naylor South Island Representative and Sharron Davie-Martin South Island representative.

The total amount available for distribution was \$17664.12.

The total amount applied for was \$33830.40 from twenty-four applications.

Of these, twelve grants were made, totalling \$15,250.

We discussed what constitutes "rural" in this context. The Committee believes that this needs to be more clearly defined and that applicant's information needs to establish that the funding sought is intended for the benefit of those living rurally. Many urban organisations are applying without specifying how those living in rural areas will be the beneficiaries of a grant.

Fiona Gower
Chair

RURAL COMMUNITIES TRUST | ANNUAL REPORT 2019

The Rural Communities Trust was established in 1982 to provide financial assistance to groups, families and individuals in rural areas who due to their location may otherwise be disadvantaged. The Trust supports the concept of “helping people to help themselves.”

Since its inception, more than \$700,000 in grants has been made to individuals, groups, families and communities and has provide assistance for health, welfare, education, craft, sporting and community needs

The Rural Communities Trust met twice this year on Tuesday, 16 October and Friday, 10 May.

As at 30 June 2019, the Council Trustees included a representative of the Federated Farmers Board, a representative from Federated Farmers, a representative from Rural Women New Zealand and two positions for Principal members. Presently, only one of these two positions is filled by a representative from ANZ. There are two Federated Farmers staff members who administer the Trust. The Rural Women New Zealand representative position is held by the National President.

The Trust Constitution is due to be reviewed and updated so the Trust can then become more proactive in approaching and securing funding from organisations and businesses to support the Trust’s work.

There have had a number of changes in Trustees and support staff during the past year.

Like all contestable funds, there are more applications for the funding than there is money available for so many worthy applicants. It is not an easy task to do to determine which applications will be successful and which will not. The Trust tends to support community groups over individual grant applications and those by students, except in exceptional circumstances.

Grant Round 113:

There were twenty applications for Grants in this round. However, many did not fit the criteria or were not suited to the Trust’s ethos. Some applicants were asked to reapply for projects within the criteria.

Of the \$7000 available, grants totalling \$5000 were made to five applicants.

Grant Round 114:

Of the eight applications considered, four were approved and two other applicants were asked to re-apply providing more information or more details of the projects.

A total of \$6567.13 was distributed.

Fiona Gower
RWNZ

NZ INSTITUTE OF RURAL HEALTH | ANNUAL REPORT 2019

2018/2019 Report for Rural Women New Zealand

It has been a steady year for the Institute completing contract delivery and achieving a modest financial surplus at year end (June). The Trust Members are Wendy McGowan ONZM Chairperson, Dr Rawiri Keenan, and Kim Gosman, also our very capable CEO Robin Steed, all members at the meeting have a strong commitment and focus on rural health.

Contract delivery on the Major Waikato DHB Rural Support Contract continued. The institute has contact with all 27 Waikato rural secondary schools and offers a range of services which include, facilitating health expos at local rural hospitals, where health professionals spend time with students discussing career options. The very popular “medical taster” day continues with 24 Year 13 students spending the day at the Waikato Medical Clinical School. All contracts with Waikato DHB will cease at the end of 2019.

Scholarships to the value of \$65,000 were awarded in February, and went to undergraduate rural Waikato students studying health sciences.

Due to confidential and sensitive discussions, at this stage, I am unable to predict or report on the viability for the Institute into the future.

The Institute continues to support rural organisations in project and personal support in an environment that this year has been unsettled and stressful for all working in the rural health sector.

To Robin my heartfelt thanks, for all you do for the NZIRH as CEO. I’m not sure we would function as well without you.

Thank you to the rest of the Trustees.

Wendy McGowan
ONZM Chairperson

KATE SHEPPARD MEMORIAL TRUST | ANNUAL REPORT 2019

September 2018 saw the Kate Sheppard Memorial Trust Advisory Committee hosting a celebration for the 125th Anniversary Suffrage Event and announcement of the Award Recipient. The \$4000 scholarship recipient was Kelly Waiana Tikao, a Registered Nurse and PhD student at the University of Canterbury, who is researching Kāi Tahu birthing traditions and practices related to conception, pregnancy and birth.

With the celebration event at the Knox Church, Christchurch and the generosity of Kate Sheppard Supporters, \$25,000 was added to our coffers.

Unfortunately, as the fundraiser wasn't held until near the end of the financial year, we could not get the full benefit of these funds. Once the books were audited and the situation assessed, this was unfortunately too late to award a scholarship for 2019. Moving forward for 2020, the

Committee has agreed and in a position to offer a \$3,000 Scholarship.

The Committee continues to acknowledge NZ Women's Suffrage Day on the 19th September with a gathering at The Kate Sheppard National Memorial in Christchurch.

Donations are welcome to the Kate Sheppard Memorial Trust to help continue to grow the fund, following is the information you will need: Perpetual Guardian Trust Limited 02 0500 0730149 00 - Reference Kate Sheppard 19771116.

Two or three Meetings are held in Christchurch throughout the year and I have represented Rural Women N.Z. on each occasion.

Sandra Curd

18 September 2019

RURAL EDUCATION REFERENCE GROUP | ANNUAL REPORT 2019

The Rural Education Reference Group (RERG) consists of approximately twelve national organisations with significant involvement with rural education.

Staffing continues to be a major issue for many rural schools. The challenge is to attract and retain teaching graduates to create a sustainable long-term workforce.

For small and isolated schools, the costs of maintaining and repairing school property can be a financial burden. The travel and repair costs for tradespeople to fix, for example, septic tanks and earthquake repairs are drawn from the property budget leaving little for maintenance.

Sole charge and isolated schools have concerns around health and safety guidelines, personal development and release time.

Principals and staff of rural schools noted an increase in physical violence towards them. They are also noticing an increasing number of mentally unwell children in schools suggesting an urgent need to address the underlying issues and also the restraint guidelines.

Speakers have included representatives from NZTA with discussion around road safety and transport issues for rural schools. Questions were raised about speed past schools,

school bus eligibility and school transport contracts expiring 31 December 2020. There appeared to be no knowledge of the RWNZ flashing lights trial in Ashburton. These points were included in RWNZ's submission on the Road to Zero: Creating New Zealand's new Road Safety Strategy 2020-2030.

The Tomorrow's Schools Review has been addressed by speakers answering questions on how proposed changes will impact rural schools especially the education hubs and funding for special educational needs co-ordinators (SENCO).

Members have reported on some of the special characteristics and advantages rural schools can offer where academic knowledge can be used in a local context. This includes curriculum opportunities for agribusiness lessons in raising and selling pigs, projects around protecting endangered species, tramping and surfing using the natural surrounding environment to influence and support students' learning.

Sue Higgins

Education Portfolio Convenor

BAY OF PLENTY RURAL SUPPORT TRUST | ANNUAL REPORT 2019

Our Chairman Miles Mander reported at Bay of Plenty Rural Support Trust (BOP RST) Annual General Meeting held on 7th May 2019 that although the April 2017 Bay of Plenty/ Edgecumbe floods and cyclones are now over two years ago there are still on-going repercussions from these extraordinary events within this region.

The Bay of Plenty Facilitators, of which there are now five plus a Team Leader and a Coordinator have been kept busy this year as a result of those events.

Several rural recovery BBQs around the region were held in June of last year, one year after the events to recognise progress made and to give effected people the opportunity to reflect on those challenging times. Both The Whakatane District Council and the BOP Regional Council funded these events.

It was felt prudent to establish some data from those effected and a survey was organised by the BOP RST Coordinator which has now been completed and sent out to the local media. Results clearly indicate that the outcomes were largely complementary.

Rotorua was hit by a storm which resulted in severe flooding in Reporoa and Rerewhakaaitu on the 29th of April 2018. BOP RST Facilitators and the Team Leader were active in providing support for affected farmers and received formal recognition from the Rotorua District Council. Since then the year has been largely “business as usual” with the Trust Facilitators finding plenty to do and the local 0800 number taking regular calls.

Nationally the RST organisation has been very focused on providing support to farmers affected by Mycoplasma Bovis. The Bay of Plenty has been very fortunate to not be affected. Close liaison with the Waikato RST, who holds MPI funding should we need to assist, has been established this year. Several of the Facilitators have received additional training and our Team Leader has been involved with MPI in the recent review of programme processes. The role that RSTs have to play in such events has proved to be very significant and important learnings will undoubtedly come forward.

The profile of BOP RST as an organisation has been in front of the agricultural community this year with several events attended such as the Opotiki Ag Day and a trade stand was organised for DairyNZ's Forum held in Rotorua in May. Road signs about the RST have also been erected around the region in prominent places.

During quieter times more emphasis has been put on the training and preparedness of the Facilitators. Red Cross, physical and psychological First Aid Courses have been attended as well as training days put on by the Waikato RST updating Mycoplasma Bovis information by renowned health expert Lance Burdett.

An Emergency Management Primary Sector Coordination Group (PSCG) is being established in this region. The purpose of this group is to integrate the agencies in the Primary Sector alongside BOP Civil Defence Management to prepare, respond and recover from any future adverse events. The PSCG recognises that strong leadership, communication, coordination, collaboration and integration with BOP Civil Defence Emergency Management (BOP CDEM) will increase the effectiveness of support for primary producers and speed up recovery. Work on this project will continue through the coming year.

The BOP Rural Support Charitable Trust is a voluntary organisation with the vision of supporting and strengthening Bay of Plenty rural people and their communities through challenging times – not unlike RWNZ's mission. The Trust intends to build and maintain the necessary relationships that assist recovery from challenging times, to facilitate access to services that meet the needs of rural people and the rural community in challenging times and to be a Trust that represents the diversity of the BOP rural community.

It is my ongoing privilege to be a part of this organisation.

Mary McTavish

August 2019

Farewell to Old Friends

Shirley Topp - Amuri Dinner Group

Joan Gower - Tutaenui Branch
– National Service Award and BLM

Yvonne Adams - Kaikohe Branch - BLM

Pat Shepherd - Doubtless Bay Branch

Rosemary Cunniffe - Toko Branch





TAIRĀWHITI INTERPROFESSIONAL EDUCATION PROGRAMME (TIPE) TE HŌTAKA RANGA NGAIO-MAHA O TE TAIRĀWHITI



Background

The Tairāwhiti Interprofessional Education (TIPE) programme began in 2012 and brings senior pre-registration students from different health disciplines together to learn with, from and about each other while gaining clinical experience in rural New Zealand. The programme is based in Tairāwhiti (Gisborne) with a satellite programme in Wairoa. Tairāwhiti is the remote eastern-most region of the North Island of New Zealand

The TIPE programme is run by University of Otago in conjunction with the Eastern Institute of Technology (EIT), Otago Polytechnic, the Tairāwhiti and Hawkes Bay District Health Boards.

Final year students live together in shared accommodation in five week rotations at either Gisborne or Wairoa hospitals and are from eleven health professional degree programmes from tertiary education institutions:

- University of Otago - dental, dietetic, medical, oral health, physiotherapy, pharmacy
- Eastern Institute of Technology - nursing and social work

- Otago Polytechnic - occupational therapy
- AUT - paramedicine
- Massey University - speech language therapy.

Objectives

Key learning objectives incorporate principles of rural health care, Hauora Māori, long term condition management and interprofessional health care. Students also meet discipline specific clinical learning objectives.

More information about the Tairāwhiti IPE programme is available at www.otago.ac.nz/tipe



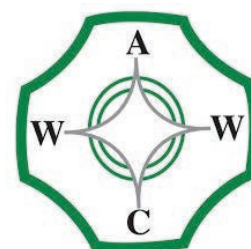
2020 ACWW SOUTH PACIFIC AREA CONFERENCE PAPUA NEW GUINEA

Registration is now open for the 2020 Associated Country Women of the World (ACWW) South Pacific Area Conference in Port Moresby, PNG, next June. Discounted early bird registration is available until Tuesday, 31 December 2019.

There is a Group Booking for accommodation at the Holiday Inn Express Port Moresby. Attendees are to book their own accommodation and Members can make

a booking at either the Holiday Inn Express of the Holiday Inn and Suites.

Registration forms and information on accommodation options can be requested from National Office.





ACTIVATORS PROGRAMME

Our inaugural group of Activators at the NZI Rural Women NZ Business Awards from left to right: Francesca, Gemma, Andrea, Hilde and Claire

As part of the partnership between Rural Women New Zealand and the Ministry for Primary Industries this year, we jointly ran an Activator Programme in Wellington on Thursday, 21 November. This type of programme is designed to help budding entrepreneurs and innovators and their businesses. Our Activator invited five rural women who were at the beginning of their business journeys to participate in an individual mentoring session, and then to stay on and attend the first day of the RWNZ Summit.

The individual session was like being part of a friendly “Dragon’s Den” in which each entrepreneur pitched their business to a panel of mentors who helped them with business planning or on how to bring the business ideas to reality or how to overcome obstacles that might be getting in the way or how to take the next steps in developing that business.

The candidates for the Activator programme came from as far afield as the Chatham Islands, Great Barrier Island, Waikato and Taranaki and the businesses they have started were just as diverse:

- **Gemma Adams** owns and operates her business from the farm she and her husband and two small children in South Taranaki. Her business *Vizlink* creates visual communication tools for farms and agri-businesses.
- **Hilde Hoven** operates *Good Heavens*, which offers dark skies tours, with business partner Deb Kilgallon on Great Barrier Island.
- **Francesca Bonventre** and partner Kaai Silbury own *Go Wild* which produces freeze-dried Chatham Island honey.
- **Andrea Rowe** has recently launched her business, *Living Essentially with Andrea Rowe* and is working with a range of essential oils and would like to be at the heart of a Taranaki holistic wellness space.
- **Claire Martin** makes beautiful bespoke woolen coats under her label, *Velma and Beverley* using New Zealand wool.

The “Dragons” were led by Marian Johnson, who has the excellent job title of Chief Awesome Officer, from the *Ministry of Awesome*, a Christchurch based company which specialises in developing and supporting budding entrepreneurs. The Ministry for Primary Industries was represented by Cathy Robinson who is the Director Investment Portfolio at MPI. RWNZ selected Kristy McGregor as a panellist. Kristy is passionate about engaging rural communities, and connecting people and ideas. She has worked on numerous grass roots projects, and it’s through fostering partnerships that she’s created the Channel Country Ladies Day, a festival gathering women from across outback Australia, and the Horowhenua Taste Trail, connecting townfolk with specialty local producers. Lisa from RWNZ National Office also sat on the panel.

This programme was an amazing experience for the entrepreneurs and the panellists. We all learned something during the day. It was especially interesting to see the individual challenges and experiences each of our entrepreneurs face.

Late in the day, we brought all five entrepreneurs together for a debriefing session and their first opportunity to meet each other. They bonded over dinner and stayed until closing time at a local restaurant.

As part of the programme, our five entrepreneurs had been invited to stay for the first day of the Summit (Friday, 22 November) to attend the business skills session in the morning hosted by NZI, the policy workshops in the afternoon and the NZI Rural Women NZ Business Awards. Having a day with Members and hearing more about the work of RWNZ gave each the opportunity to further develop their skills, make new connections and networks and be inspired by this year’s Award winners.

The Activator programme was a huge success as a result each of the entrepreneurs is keen to further their relationship with RWNZ and has been gifted membership for one year.

Fun, Fitness & Friendship

24-26
April
2020

The **TRIPLE F CHALLENGE** is back by popular demand!

COME AND EXPERIENCE **CROMWELL** AND SURROUNDINGS

By sight, sound, taste and with a good pair of walking shoes

DAY ONE: FRIDAY 24 APRIL

Join us for a guided tour of some of Cromwell's famous goldfields. Later in the day 'Farm Girl turned Businesswomen', Christine Wardell, will be our guest speaker over dinner. Christine's very popular *Christinz Clothing* range will also be on display.

DAY TWO: SATURDAY 25 APRIL

The day will start with an ANZAC Day Service at Bannockburn followed by a delicious picnic lunch by beautiful Lake Dunston.

There is a choice of afternoon activity:

Either: you can make your way by cycle, foot or car on the 4 Barrels Wine Trail (please note that transport will be arranged for those who wish to travel by car)

Or: take the 45 degrees Parallel walk (2km with 501 steps).

Our guest speakers after dinner will be the 'two Emmas', both of whom are District Court Judges. One sits on family violence cases; the other on drug and alcohol matters. It should be a very interesting evening.

DAY THREE: SUNDAY 26 APRIL

This commences with breakfast and a special guest speaker, Pauline Blomfield, from K9MD which is our charity of choice for this Challenge.

Then it will be time to get outdoors again and participants can choose to walk the Bannockburn slicing track (4km) or ride a bike from Old Cromwell Township along the Bannockburn cycle trail (11kms return).

Our last event will be a farewell lunch at 1.00pm at The Gate in Cromwell.

This 'new look' Triple F Challenge has something for everyone.

Accommodation has been reserved at three venues in and around Cromwell for the weekend and there is more information on these options on the Registration Form, which can be found online at <https://ruralwomennz.nz/wp-content/uploads/2019/10/Registration-Form-for-Triple-F-Challenge-2020.pdf> or a copy can be requested from National Office. Registrations close Friday, 31 January 2020.

BOOK REVIEW

Passion – Living, Feasting and Writing deep in the Marlborough Sounds

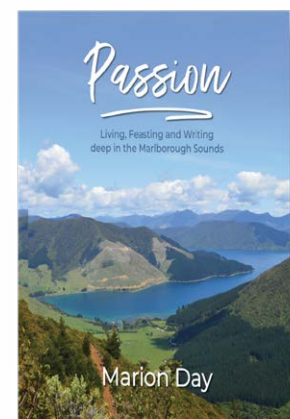
This new offering from Marion Day is a truly beautiful book - one that you can pick up and immerse yourself in.

The moment you open this stunning pictorial coffee-table book, you can sense a liveliness throughout its pages as it showcases many aspects of life within Clova Bay – one of the three main bays making up the Pelorus/Te Hoiere Sound, the largest of the Marlborough Sounds.

Each section of *Passion* delivers a veritable feast of photography, recipes, poetry, short stories and diary entries, and a comprehensive index allows easy, fast cross-referencing.

Marion has generously offered a Special Offer to RWNZ Members. *Passion* retails at \$65 but Marion is offering a Members special offer with \$10 of each book being donated to Rural Women New Zealand.

We have a small number of this beautiful book available at National Office. This could be your perfect Christmas present. Please contact Lisa at National Office for more information.



THE GUILDS AWARDS 2019

The New Zealand Guild of Agricultural Journalists and Communicators Awards (“The Guilds”) celebrate excellence and achievement in agricultural journalism. This year’s Guilds were held in Wellington on Friday, 18 October.

RWNZ sponsors two Awards. The Rural Women New Zealand Journalism Award was established to recognise the important contribution women make in their rural communities and is awarded to a women journalist whose work reflects this. This year’s winner was Sally Rae of the Otago Daily Times.

Our second Award, the Rural Women New Zealand Connectivity Award, recognises the importance of connectivity to rural communities and agri-businesses and it celebrates journalism that raises awareness of the issues and benefits of rural connectivity. Nelson-based, freelance journalist, Ann Hardie, won this Award for her articles appearing in The Dairy Exporter.

The Guilds were attended by National Chair, Penny Mudford, and Lisa Thompson from the National Office on behalf of RWNZ. It was a thoroughly interesting and often hilarious night with the presentations intermingled with banter between the Master of Ceremonies and the floor. During the course of the evening, 14 Awards were announced.

The top Award, the Ministry for Primary Industries Rongo Award, was won by Country-Wide for their articles on the issues surrounding land being used to accrue carbon credits rather than traditional farming.



National Chair, Penny Mudford, with RWNZ Journalism Award winners Anne Hardie - The Dairy Exporter (top) and Sally Rae - Otago Daily Times.



HAIRY FEET
Scenic Film Location Tour
WAITOMO



Consistent Trip Advisor "Certificate of Excellence" winner

Bookings advisable

MIDDLE EARTH AT ITS BEST!

Join our small, personally guided tours through our sheep & beef farm near Waitomo which featured extensively in "Lord of the Rings" Director Peter Jackson's "The Hobbit".





An enjoyable tour for more than just middle earth fans.

Have your camera ready as we entertain & guide you through ancient native forest & under spectacular limestone cliffs.

We're proud to have the most screentime of all locations.




P: +64 7 (07) 877 8003
E: info@hairyfeetwaitomo.co.nz
A: 1411 Mangaotaki Road, Piopio
www.hairyfeetwaitomo.co.nz



RWNZ Grant Recipients

Congratulations to the following recipients of RWNZ administered grants and bursaries:

Audrey Reid Education Fund:

Awarded to Cheyenne Wilson, who is studying for a Bachelor's Degree in Agribusiness and Food Marketing

Florence Polson Secondary School Boarding Bursary:

Awarded to Emily Gjestad from Region 3

Secondary School Boarding Bursary:

Awarded to Isabelle Eves from Region 7

Secondary School Boarding Bursary:

Awarded to Kate Pease from Region 6

Year 12/13 Boarding Bursary:

Awarded to Mathew Rockell from Region 3



Treat your pooch to gourmet, grain free, free range doggytreats made with only the freshest, locally sourced, human-grade ingredients. Proudly handmade in the Wairarapa.

We also offer an extensive natural chew range to keep those canine teeth happy and healthy. Woof!

www.doggytreats.nz | 027 226 1655
f doggytreatsnewzealand i @doggytreatsnz



HEALTH & WELLBEING CONSULTANTS

SPECIALISTS IN CREATING RURAL WELLBEING

Understanding rural life

"Sarah Donaldson's rural mental health workshop was the best session of the day, she's one of us and relatable"

Tea Retreats provides a range of workshop and wellbeing sessions which offer proven ways to stay productive and well while living and working rurally.

- Farm Teams
- Farm Discussion Groups
- Industry Events & Conferences

Contact us to discuss

how we can help you live your best rural life.

Sarah Percy (Registered Dietitian)
Sarah Donaldson (Clinical Psychologist)



enquiries@tea-retreats.co.nz . www.tea-retreats.co.nz

SCHOOL BUS AWARENESS CAMPAIGN

This year Region 2 has taken on an awareness campaign promoting “20k either way past a stationary school bus”.

To assist with the project, bumper stickers, stickers and school buses have been printed to provide awareness when attending events/schools/meetings etc. Region 2 also intend to approach trucking companies asking them to display the bumper stickers on their vehicles. Already Mid Canterbury Provincial have participated in a Safety Village at the local Ashburton A&P Show promoting the message and the catchy slogan.

We welcome other Regions to come on board with this awareness campaign. Printers have been utilised in Ashburton and Timaru to create the various items and therefore we would ask if you are interested, could you kindly contact our Area Committee directly to arrange for a supply of items to be arranged and forwarded to your Region. This will also ensure consistency of the message nationwide.

An estimate of costs inclusive of GST are:

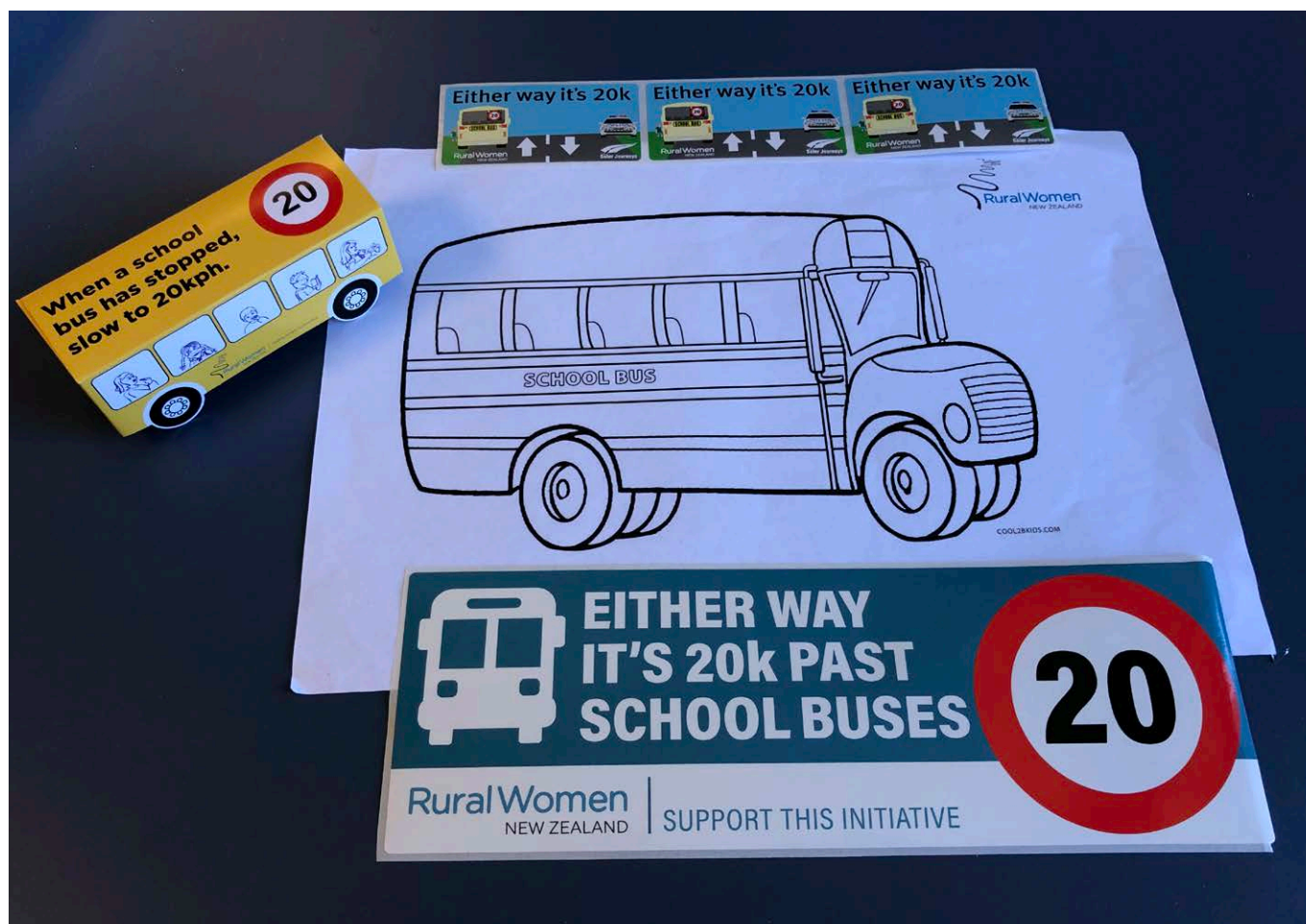
Self Adhesive Labels	.30c each
Bumper Stickers	.65c each
Foldable School Bus Models	.75c each
Postage would be additional.	



Please do not hesitate to contact us to discuss your involvement.

Sandra Curd
 Leadership Councillor
 curd@xtra.co.nz
 (03) 302-4754
 027 324 5635

Margaret Chapman
 Area Chair
 mgchapman@xtra.co.nz
 (03) 693 9994
 027 207 6008



ADVERSE EVENTS RELIEF FUND

The Rural Women New Zealand Adverse Events Relief Fund (AERF) was established to provide assistance to individuals, groups and communities in need after adverse events and natural disasters.

To help grow this fund, there are two products for sale, the proceeds of which go directly to the AERF:

RWNZ's pure wool, New Zealand-made **Aftersocks**, available online at www.aftersocks.nz or from the National Office.

Our popular **peg bags**. Each peg bag is \$25.00 plus postage, available to purchase from the National Office, or visit www.ruralwomennz.nz

Alternatively, donations can be made directly into the Adverse Events Relief Fund by bank deposit to the following account:

Account Name: **Rural Women New Zealand**

Bank Account: **06-0501-0778590-00**

Ref: **AERF**



Wild Jewels

Liza and Amy, with volunteers and support from **Wild Jewels**, started their philanthropic work by building a library to provide much needed books to Daasanach children living in and around the village of Ileret, 17 km south of the Ethiopian border. Liza has recently returned from Kenya after building another two classrooms to complete the El Bokoch Primary School. The next goal is to establish a dual high school to further provide educational opportunities to children living in remotest Northern Kenya.

Wild Jewels has two distinct collections. One focuses on freshwater pearls, crystals and semi-precious stones set in sterling silver. The other showcases finest quality paua to create a unique feature of their necklaces, earrings and bracelets - being reversible - to reveal elegant white mother of pearl on the alternate side. With quality workmanship and their heart-warming story, **Wild Jewels** go the extra mile and go to the end of the earth. To celebrate ten years of building and managing educational facilities as volunteer project managers, Liza and Amy would love to gift a Pearl and Rose Quartz necklace to one of the lucky readers of this month's Express.

To enter this wonderful competition, please send your name and contact details to competitions@ruralwomennz.nz.



From our farm to your shower - naturally

simplenakedsoap

100% Natural New Zealand made Goat's Milk Soap from our Spray Free Farm
NO Chemicals - NO Fragrances - NO Palm Oils - NO Animal Fats (Lard or Tallow)
Proven specialist soap manufacturers for sufferers of: Eczema, Psoriasis, Dry Skin,
Oily Skin, Acne, Sensitive skin - in fact any skin type at all.

We have you covered - mums, dads, children, office workers, professional athletes
- if it's for the skin, we make it!



www.simplenakedsoap.co.nz



RWNZ MOBILE DISPLAY TOOLKIT

Following suggestions by Members at this year's National Conference in Whangarei, the National Office has prepared two 'Toolkits' which contain everything that you might need for a RWNZ display at any kind of event.

This kit contains a canvas banner, a custom RWNZ logo table cloth, a range of posters and flyers, samples of RWNZ merchandise, order forms, table stands and a range of fixings and fastenings for all manner of locations. There are items that be used indoors and outdoors and the whole lot packs down into a Toolbox which is durable so it can travel from location to location.

There is one kit for the South Island and one for the North

Island. The South Island toolkit has been tested at two events in Region 2. Thank you very much to Marion Dent for being the official Toolkit tester and for the improvements you have suggested.

Thank you also to Marion for the photos of the Toolkit in action. There are different components to choose from and these can be used alongside other items on a display. This picture was taken at the Ashburton Show and has a great display of *Either way it's 20k* collateral and toolkit items.

If you have a local event coming up and would like to use one of these handy Toolkits, please contact Lisa at the National Office.

Rural Women New Zealand would like to thank our sponsors

Premier Partner:



Partners:



Supporters:



National Office News



As you can imagine, the last three months of the year are the peak busy time for the National Office. In our last update, we advised that preparations for the Summit were well underway. These preparations continued throughout the end of October and into November – in fact right up until the Summit itself.

Holding three separate events across three different venues required a large amount of organisation and all National Office staff worked hard to prepare for and produce the business and policy sessions and NZI Rural Women NZ Business Awards on Friday, and the RWNZ Business Session on Saturday. Thank you to the Members who attended Summit and to all the sponsors, partners, speakers, presenters, suppliers, all the venues and their staff for their guidance and help.

In addition to the Summit, all of the behind the scenes, business as usual work, has continued. This includes everything from managing the accounts, preparing for the November Board Meeting, addressing Members correspondence and calls through to exercising RWNZ's authoritative voice, working with like-minded organisations to advance the interests of rural women, their families and rural communities and representing RWNZ at a range of conferences and fora.

Angela has represented RWNZ in collaborating with industry representatives and stakeholders including participating in the Workforce Development Committee project led by Primary ITO and in the Rural Education Reference Group which met to consider issues facing rural education in New Zealand. This included a discussion with Ministry officials regarding school residences. Angela was also interviewed by UMR Research on the use of technology in rural New Zealand and met with a new Ministry of Primary Industries official to discuss how RWNZ and MPI might work closer together.

Written submissions lodged on behalf of RWNZ included:

- Action for Healthy Waterways
- National Policy Statement – Highly Productive Land



- Arms Legislation Bill – oral submissions were also made.

Liz's steep learning curve on all things RWNZ continues. There has been a huge number of meetings, conferences, fora and events to attend in the last few months. Here is a short summary:

October

- Tahi Ngātahi
- Worksafe
- Rural Trail NZ
- Upper Hutt BPW
- Women's Institute
- Access Community Health
- NZ Rural General Practice Network
- Crisis Intervention and Management Australasia Conference (including as a presenter).

November

- Zonta 100 year celebration
- Ministry of Health Forum
- Better Later Working Lives Forum and launch
- Rural Fest - Rural Health Alliance Aotearoa NZ (RHAANZ) two-day forum
- International Women's Caucus
- Midwifery Council
- AWDT Escalator graduation evening
- Ministry for Women
- Environmental Protection Agency.

December

- Federated Farmers
- Pharmacy Guild of New Zealand
- College of Midwives
- Plunket Stakeholder function
- Dairy NZ and the Dairy Environment Leaders Annual Stakeholder Function
- Alzheimers NZ
- Carer's Strategy Action Plan Launch.

After three extremely busy months, the National Office staff are looking forward to a break over the Christmas period. The Office will close on Friday, 20 December and re-open on Monday, 6 January in the new year.

Lastly, Merry Christmas, best wishes and happy new year from the National Office staff.

Photos: (left) Liz inside a large inflatable bowel at RHAANZ forum in November; (right) Liz with two lovely midwives, Kendra Short and Tracey White, at Ruralfest.

Introducing PROJECT WARMTH

Rural Women New Zealand wants to celebrate and acknowledge the wool and knitting projects undertaken by Members nationwide. RWNZ Members have a long heritage of creating woollen items for fundraising, charitable giving and for competitions. RWNZ continues to be an advocate for wool as a natural and sustainable resource with many beneficial properties.

Project Warmth is the banner under which RWNZ can embrace all the existing wool based projects while offering something new for those who wish to participate.

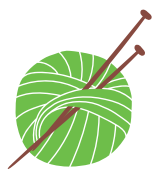
RWNZ hopes to harness the talents of its Members, support the New Zealand Wool industry and promote the work of RWNZ through Project Warmth. The concept is that Members can join together to work on a collection of knitted products which will be branded and identified as part of RWNZ's Project Warmth range. Project Warmth garments will be made from the RWNZ palette of colours and from a recommended set of patterns. A knitted garment made from the recommended RWNZ colours from a recommended pattern will be eligible to be labelled with a custom-made RWNZ label as modelled by Office Manager Felicity Bunny.

The wool will be available from Skeinz, the Natural Yarn Store, which is located in Napier. Skeinz is the retail face of Design Spun Ltd which is one of just two worsted spinners remaining in New Zealand and makes top quality hand knitting, weaving and textile yarns. It is also the only mill in New Zealand where you can buy either onsite from the mill store or online from www.skeinz.com

Members will be able to buy premium quality natural fibre yarns direct from the mill and have them delivered nationwide to make Project Warmth garments. It will be up to each Region to decide what to do with their Project Warmth garments. They could be gifted to people in need, sold as a fundraiser or at an A&P Show, used to promote RWNZ or perhaps as a regional or national competition.

What do you need to join the new Project Warmth initiative?

- A set of knitting needles
- A copy of the patterns which are available on the RWNZ website or by phoning the National Office
- Any combination of the wool colours that make up our RWNZ palette which are available from Skeinz (www.skeinz.com)



Skeinz, the Natural Yarn Store, has offered special pricing on the Southlander range for RWNZ Members.

A 200gram ball of Southlander in Charcoal, Dusky Blue, Java Green and Gypsy Green will receive a 20% discount on the everyday price of \$14.95 a ball, bringing the price down to \$12 a ball.

To take advantage of this 20% discount offer on the Southlander range, after you enter your yarn selections, enter the coupon code: RURALWOMEN as you check out.



The Perendale Apple and Chatswood Brighton are priced at just \$3.95 a 50 gram ball!

After that, it is up to you. You might want to knit for Project Warmth in the comfort of your own home or you might want to meet other Members to knit together.

If your garments are eligible for RWNZ branding, please contact the National Office and labels will be sent to you.

What is Project Warmth?

Providing warmth for the body, mind and soul.

- Beautiful knitted garments from New Zealand made wool will provide physical warmth for their recipients;
- Knitting is a type of meditative craft which promotes mindfulness and is good exercise for the brain;
- Taking part in Project Warmth will enhance connections between Members while supporting our wool industry and rural communities.

Life Membership

CITATION FOR **KERRY SMITH**

Mid Canterbury Provincial President (August 2017-2018)

Covering - 6 Provincial meetings and 4 Link meetings.

During this time the Provincial project was knitting for newborn babies. Items were delivered to Christchurch.

Under Kerry's leadership some provincial activities were performed:

- Catering Hinds ploughing match.
- Movie night with proceeds to Birthright.
- Catering with Women's Institute for Age Concern Expo.

A combined committee of women's groups was formed to celebrate Kate Sheppard's 125 Year Memorial and Kerry chaired this committee. The Provincial celebrated its 85th Jubilee and these arrangements were overseen by Kerry.

In 2017 she was Provincial Delegate at RWNZ National Conference and also our representative at Federated Farmers Provincial Meetings for the year of her Presidency.

An adequate supply of media reports were prepared for printing in the Ashburton Guardian and Federated Farmers' monthly newsletter. Kerry's Annual Report for this Provincial received special recognition at National level.

We take much pleasure in presenting this Mid Canterbury Provincial Life Membership award and thank Kerry for her leadership, dedication and commitment to our organisation.



Discover nature's
skin calming miracle.

ORGANIC REMEDIAL SKIN REPAIR

Peonies are arguably one of the world's most beautiful flowers, but their roots are truly miraculous. Pure Peony combines science and the powerful ingredients of the Peony root to help heal problematic skin fast.



Made in New Zealand
www.purepeony.com



purepeonyTM



LEADERSHIP COUNCILLORS & AREA COMMITTEES BY REGION

Region 1 Lower South Island	Position	Contact Email
Pat Macaulay	Leadership Councillor	Pat.macaulay@outlook.com
Heather Smith		iahsmith@gmail.com
Virginia Broughton		broughtonvp@gmail.com
Sally Hammond		lrsjhammond@netspeed.net.nz
Elaine Sloan		sloanrimu1@xtra.co.nz
Gloria McHutchon		gloria_alexm@hotmail.com
Raewyn van Vugt	Area Committee Chair	whitegold@rivernet.co.nz
Judy Kingan		jaydeekgn@gmail.com
Margaret Pittaway	Advisory – Ex officio	lochlea@xtra.co.nz

Region 2 Canterbury	Position	Contact Email
Sandra Curd	Leadership Councillor	curd@xtra.co.nz
Beverley Forrester		forrester@amuri.net
Mary Watson	Vice Chair	mmf.wats@gmail.com
Christine Anderson		jcandynz@gmail.com
Margaret Chapman	Area Committee Chair	mgchapman@xtra.co.nz
Margaret Chapman [Hook]		randmchapman@hotmail.com
Elsa Hydes		esurya@hotmail.com
Cheyenne Wilson		ctkwilson@hotmail.co.nz

Region 3 Top of the South	Position	Contact Email
POSITION VACANT	Leadership Councillor	
Melva Robb	Area Committee Chair	melva@soundsreflection.co.nz
Diane Higgins	Secretary and secondary contact	dmhiggins@xtra.co.nz
Margaret Faulkner		NO EMAIL
Jennifer Wiese		NO EMAIL
Carolyn McLellan		balmac@xtra.co.nz
Carol Wells		NO EMAIL
Margaret Milne		margarwpt@kinect.co.nz
Dot Dixon		dotsf9@gmail.com

Region 4 Lower North Island	Position	Contact Email
Liz Hancock	Leadership Councillor	liz.hancock@ruralwomennz.nz
Joan Black	Area Committee Chair	joanblack@inspire.net.nz
Jean Coleman	Secretary	ngaios@farmside.co.nz
Helen Clark	Treasurer	trevorandhelen25@gmail.com
Liz Monk		liz.dennis@xtra.co.nz
Leonora Spark		ljnajsark@gmail.com
Pauline Masters		paulinemasters@xtra.co.nz
Shona Field		mtwilliam@inspire.net.nz

Region 5 BOP / Coromandel	Position	Contact Email
Sue Vowell	Acting Leadership Councillor and Area Committee Chair	tepudeer@xtra.co.nz
Chris Paterson		chrisjam@xtra.co.nz
Jo Gravit		pandjgravit@xtra.co.nz
Lyn Staples		urwinfarms@xtra.co.nz
Wendy McGowan		rusty_wendy@xtra.co.nz

Region 6 Greater Waikato	Position	Contact Email
Judy Board	Leadership Councillor	judy.board@xtra.co.nz
Malvina Dick	Area Committee Chair	malvinad@xtra.co.nz
Liz Morgan	Treasurer	lizziemorgan36@gmail.com
Karen Attwood		theattwoods@actrix.co.nz
Eileen Barker	Secretary	efbarker74@gmail.com
Susan Black		susblack@gmail.com
Parminder Singh		lyotijora@gmail.com

Region 6 Taranaki	Position	Contact Email
Shirley Read	Acting Leadership Councillor and Area Chair	sdread@xtra.co.nz
Joyce Lawrence	Treasurer	niaruo@inspire.net.nz
Margaret Vickers		r.m.vickers@xtra.co.nz
Jennie Purdon		chrisjen1@orcon.net.nz
Helen Bayliss	Secretary	harrybayliss@xtra.co.nz
Patricia Jones		colinandtrish@xtra.co.nz
Vivienne (Viv) Grigg		evgrigg@hotmail.com

Region 7 Top of the North	Position	Contact Email
Pauline Hilliam-Olsen	Leadership Councillor and Area Chair; Facebook/Newsletter	pauline.hilliam@xtra.co.nz
Sherrill Dackers		sherrillmd@xtra.co.nz
Cynthia Williams		cynwilliams818@gmail.com
Mary Dale-Taylor	Treasurer	m.t.dale-taylor@xtra.co.nz
Noelene Price-Quedley	Secretary and secondary contact	noeleneq@hotmail.com
Christine Pikett		NO EMAIL



LEADERSHIP COUNCILLORS

Region	Name	Contact Phone	Mobile	Contact Email
1	Pat Macaulay	03 484 7006	027 201 6921	pat.macaulay@outlook.com
2	Sandra Curd	03 302 4754	027 324 5635	curd@xtra.co.nz
3	POSITION VACANT			
4	Liz Hancock	06 308 8812	027 486 0845	liz.hancock@ruralwomennz.nz
5	Sue Vowell (Acting)	07 572 0707		tepudeer@xtra.co.nz
6	Shirley Read (Taranaki)	06 752 3698	027 665 9047	sdread@xtra.co.nz
6	Judy Board (Greater Waikato)	07 872 4828	027 365 0998	judy.board@xtra.co.nz
7	Pauline Hilliam-Olsen	09 439 0006	027 270 5760	pauline.hilliam@xtra.co.nz

Proudly supporting
rural businesses

as Premier Partner of the 2019 NZI Rural Women
NZ Business Awards.



NZI is one of New Zealand's largest and most well-known insurance brands. We've been quietly helping Kiwis through good times and bad for over 160 years, with comprehensive insurance services for rural businesses.

Talk to your broker about NZI.

nzi.co.nz



NZ6664/2 05/19



Ngā Wāhine Taiwhenua o Aotearoa

Rural Women New Zealand National Office 04 473 5524
Level 5, 86 Victoria Street, Wellington 6011
PO Box 12-021, Thorndon, Wellington 6144
www.ruralwomennz.nz 0800 256 467

© 2018. Rural Women New Zealand Inc (and subsequent years) All rights reserved. This publication is entitled to the full protection given by the Copyright Act 1994 to the holders of the copyright. Reproduction of all or any substantial parts of the publication is in breach of the copyright of the publisher Rural Women New Zealand Inc. This copyright extends to all forms of photocopying and any storing of material in any kind of information retrieval system. All applications for reproduction in any form should be made to the publishers – Rural Women New Zealand Inc.