

RURAL WOMEN NEW ZEALAND SUMMIT 2019

The RWNZ Summit 2019 will be held in Wellington on Friday, 22 November and Saturday, 23 November. The Summit comprises of three components: the Rural Women New Zealand Annual General Meeting, Business and Policy Workshops and the NZI Rural Women NZ Business Awards.

The Workshops will take place on Friday, commencing at 10am and the NZI Rural Women NZ Business Awards 2019 Dinner and Presentation will be held on Friday evening. RWNZ business sessions will begin at 10am on Saturday, 23 November.

The Honourable Damien O'Connor, Minister for Agriculture, Biosecurity, Food Safety and Rural Communities, will be hosting the Summit at Parliament this year.

Following the success of the NZI Rural Women NZ Business Awards last year, this year's Awards have expanded to include two new Categories: Bountiful Table and Rural Health and Wellness.

Accommodation has been reserved for Summit attendees at Thorndon Hotel Wellington which is conveniently located near Parliament. The Hotel is offering a preferential rate for RWNZ Members for the nights of Thursday, 21 and Friday, 22 November. To take advantage of the rates, guests need to contact the hotel directly via phone or email and quote booking: 288455. If guests book via any other means the rate cannot be honoured. Please also note this rate is valid for reservations made prior to 31 August 2019, any reservations made after this date will be subject to availability and at the rate of the day.

DATES

Friday, 22 November

10am: Business and Policy Workshops

5.30pm: NZI Rural Women NZ Business Awards 2019

Saturday 23 November

10am: RWNZ Business Session

ACCOMMODATION

Thorndon Hotel Wellington, 24 Hawkestone Street, Wellington

Dates: Thursday, 21 November and Friday, 22 November

Room type: Standard Queen

Rate: \$199.00 per room per night (GST inc)

Booking reference: 288455

Contact: +64 4 473 2208 or

reservations_thorndonhotel@evt.com



Entries close **31 July 2019**
so be sure to enter now
RURALWOMENNZ.NZ

NZI RURAL WOMEN NZ BUSINESS AWARDS 2019 ARE NOW OPEN

Editorial



Kia ora tātou

The past few months have provided some excellent opportunities to make connections and showcase what Rural Women New Zealand is and what we do to support and strengthen our rural communities.

The Associated Countrywomen of the World Triennial Conference in Melbourne was attended by seventeen RWNZ members. The opportunity to show the She Shears movie and the work of RWNZ to approximately 700 women from around 32 countries was a very proud moment. I would like to thank the delegation that attended for their hard work and the great team spirit throughout the Conference. The work can now begin on implementation of the Conference Resolutions, many of which are relevant to New Zealand.

I thoroughly enjoyed the National Conference in Whangarei. The event was a real success with inspirational speakers, wonderful food and good opportunities for us to be together. Thank you to Pauline Hilliam-Olsen (the magnificent MC) and the Organising Committee for producing such a great Conference.

Next up was National Fielddays® at Mystery Creek. I hope everyone has seen the photos of the RWNZ wall which showed the diversity of our members and all rural women: it was a real talking point. So was the NZI Rural Women NZ Business Awards Prize Wheel which promoted this year's Awards. It was wonderful having Jon, Michelle and some of the NZI team working the wheel with us. Prizes included products from previous Award entrants and winners. RWNZ also ran four surveys to collect data on areas of interest to rural communities.

It was a real pleasure talking to so many people at Fielddays®. Networking at Fielddays® is a big task which includes visitors to our stand, those at other sites and guests at events that we attend. This gives us excellent opportunities to tell our story and lift our profile to a diverse audience. As a result, we have already been receiving invitations to meet with other organisations and add our voice to a number of conversations. We had a large number of MPs visit us on the RWNZ stand – each

wanting to discuss current issues. It was a real privilege to have the Prime Minister visit us, view the wall and spin the NZI Prize Wheel.

It was also lovely to meet Members and their families coming through to say hello. Thank you for taking the time especially those who posed in front of the wall.

Congratulations to Rachel Dean on her MNZM which is very well deserved. It is always good to celebrate the work that our rural women do, be it paid, unpaid or underpaid. Please take any opportunities you can to celebrate what we do.

I have spoken to a wide range of audiences recently, including the Region 1 Leading Voice Workshop. Meeting the young women who attended was wonderful and having the opportunity to explain what RWNZ does, what it can do for them and how they can contribute to RWNZ was lots of fun.

As Members, we are ambassadors for RWNZ and I encourage everyone to be that when the opportunity arises. Tell our story: who we are, what we do, what we can do for others and how they can support us in that work. We are truly proud of being RWNZ Members and we should let others know this. I am often asked how to get new members. The answer is that the best way to do that is to show and tell what we do.

We look forward to our welcoming our new Chief Executive, Liz Pennington, in early September. Please take the opportunity to meet Liz when you attend the Summit in November.

Lastly, a huge thank you to the National Office team who have worked incredibly hard to keep everything on track, especially Angela McLeod who is our Acting Chief Executive. I used the analogy of RWNZ being the ship going full steam ahead with the Office being our engine room - without them we would struggle to get ahead.

Ngā mihi,

Fiona Gower

National President

NATIONAL BOARD OF RWNZ

National President International Portfolio

Fiona Gower
Tuakau
Ph: 09 232 9711
Mobile: 027 428 3884
Fiona.Gower@ruralwomennz.nz

National Finance Chair Business Portfolio

Jenny McDonald
Ashburton
Ph: 03 303 3196
jenny.mcdonald@ruralwomennz.nz

National Chair Technology Portfolio

Penny Mudford
Wellington
Mobile: 027 246 1936
penny.mudford@ruralwomennz.nz

Board Member (North Island) Technology Portfolio

Zelda de Villiers
Ruawai
Mobile: 027 221 6670
zelda.devilliers@ruralwomennz.nz

Board Member (South Island) Environment Portfolio

Gill Naylor
Omakau
Mobile: 027 338 3089
gill.naylor@ruralwomennz.nz

Board Member (South Island) Education Portfolio

Sue Higgins
Wakefield
Mobile: 021 541 534
sue.higgins@ruralwomennz.nz

NATIONAL OFFICE

Ph: 04 473 5524
0800 256 467
PO Box 12-021
Wellington 6144
enquiries@ruralwomennz.nz

Acting Chief Executive Manager: Government, Public Sector and Academic Relationships

Angela McLeod
Angela.McLeod@ruralwomennz.nz

Office Manager

Felicity Bunny
Felicity.Bunny@ruralwomennz.nz

Accounts Manager

Linda Tunley
Linda.Tunley@ruralwomennz.nz

Projects and Events Manager

Lisa Thompson
lisa.thompson@ruralwomennz.nz

Assistant to the RWNZ Board and Chief Executive Officer

Maree Myers
maree.myers@ruralwomennz.nz

Dates for the Diary

Tuesday, 23 July: Deadline for Remits to reach National Office

Friday 26 July: Region 2 Conference - Ashburton

Tuesday, 30 and Wednesday, 31 July: ProteinTECH, Auckland

Wednesday, 31 July: Deadline - Entries close for NZI Rural Women
New Zealand Business Awards

Friday, 9 August: Deadline for Annual Reports for the October Express

Thursday, 15 August: Deadline for End of Year Statement of Service Performance
and End of Year Financial Reports to National Office

Monday, 2 - Sunday 8 September: Festival of Adult Learning

Monday, 9 - Sunday 15 September: Te Wiki o te Reo Māori

Thursday, 19 September: Suffrage Day

Monday, 28 October: Public Holiday – Labour Day

Wednesday, 13 - Friday 15 November: Canterbury A&P Show

Friday, 22 and Saturday, 23 November: RWNZ Summit

Monday, 25 November: White Ribbon Day, 16 Days of Activism begins

Tuesday, 10 December: 16 Days of Activism ends

Welcome to New Members

- Lorna Crane
Individual
- Jenny Lindsay
Brightwater Branch
- Irene Collins
Individual
- Aria Sluys
Individual
- Chris Harrison
Individual
- Shyla Karaitiana
Individual
- Maria Gallagher
Doubtless Bay Branch
- Anne Robertson
Individual
- Sandra Campbell
Inchclutha Branch

Farewell to Old Friends

- Gladys Wallace – Tirau Branch – BLM
- Sylvia Fitzgerald – Tirau Branch
- Amy Jones – Lynnford Branch – NLM and BLM
- Madeline (Madge) Moore – Skinner Road Branch
- Lois Sutherland – Franklin District Branch
- Betty Paterson – Motueka Branch
- Betty Haylock – Pukearuhe-Waitoito Branch
- Elaine Diack – Crossroads Branch
- Beth Dalebrook – Region 7
- Fay Cleverdon – Kourawhero Branch
- Marge Neumann – Region 7
- Heather Elliot – Kourawhero Branch
- Inez Walmsley – Oropi Branch
- Joan Greenfield – Forest Reserve Branch – BLM
- Dorothy May Kirby – Stratford Branch – BLM

National Conference 2019

The first stand-alone RWNZ National Conference was held from 7 – 9 June in Whangarei with the theme of “A Taste of Northland: Food, land, People.” The Organising Committee truly delivered on this promise.

Conference attendees were warmly welcomed on Friday. Notably absent were Angela and Lisa from National Office as their flight to Whangarei had been cancelled and they were on a bus from Auckland instead.

After the Opening formalities, the first keynote speaker, Doctor Tanya Quin, spoke about Farming and Medicine, Challenging Assumptions. As a local general practitioner and keen agri-sector supporter, Tanya provided an interesting and stimulating perspective. The afternoon rounded off with a screening of *She Shears*.

Saturday morning began with a bang as three first time entrants competed for the Tarrant Bell and Tutaenui Bell in the speech competitions. The theme of ‘Are we there yet?’ was interpreted differently by each competitor. While the judges deliberated, Angela took the opportunity to introduce herself with a short and pithy speech. On their return, the judges confirmed that they were highly impressed by all three speakers but there could be only one winner: congratulations were offered to Gloria McHutchon from Region 1 who took home both prizes.

The Conference was delighted to host a special guest, Equal Employment Opportunities Commissioner, Dr Saunoamaali’i Karanina Sumeo, on Saturday morning. Dr Sumeo spoke about her role at the Human Rights Commission and where her portfolio and RWNZ interests overlap. She offered her assistance in the pursuit of those common interests.

The delegates then heard from Gillian and Kevin Adshead who spoke about their work in relocating kiwi to their family farm, Mataia, in the Kaipara Harbour. It is a wonderful story of valuing the land and its fauna and flora while re-establishing a kiwi population through hard work and thousands of volunteer hours. It was also very interesting to learn more about our iconic bird and its unique behaviours.

After morning tea and a chance to view the scrapbook and wool competition entries, the second keynote speaker of the day, Roberta Kaio-Makasale, discussed her work as a primary care mental health nurse in the Far North. This was particularly special as Roberta was the recipient of an Access Home Health/RWNZ scholarship and as a result,

is just about to complete her Masters in Health Science from the University of Auckland. It was incredible to see how wisely Roberta had used her scholarship and the flow on that her work is having within her community. Her gratitude to all those who have invested in her and supported her was evident. Roberta will make a real difference in the lives of the families she works with.

Our second speaker of the morning was Izzy Fordham, Chair of the Aotea Great Barrier Dark Sky Programme, who told us the story behind creating an accredited Dark Sky Sanctuary on the Island. Aotea Great Barrier was the first island in the world to gain this status and it has led to economic, cultural and scientific growth. The best time of year to be a dark skies tourist on the island is June. Region 7 has plans to hold their Regional Conference there next year.

After lunch, the Conference heard from Shannon Auton who describes herself as a reluctant entrepreneur and her story, ‘There are no ordinary moments,’ is a rollicking tale of challenges, rewards and downright scary moments. Shannon’s resilience and perseverance to overcome whatever obstacles came her way is inspiring and highly entertaining. Following Shannon, Andrew Forsyth (Chief Scientist, Aquaculture and Biotechnology at NIWA) provided food for thought in his presentation about the future for premium NZ aquaculture products in the global marketplace.

The Conference Dinner was held on Saturday night. Pre-dinner entertainment was provided by the excellent Dargaville Dalmation Cultural Club. The musicians were dressed in traditional costume and played instruments crafted in Dalmatia which was formerly part of Yugoslavia and is now part of Croatia. Immigrants came to Northland from Dalmatia over 150 years ago to dig for kauri gum and their descendants have preserved the dance and music from their original homeland. After dinner, Councillor Shelley Deeming provided an entertaining account of what it is like to share your farm with a film crew for a year. She and her husband hosted the crew filming the movie *Bellbird* which will be released nationwide soon.

Day 3 started with a Women Walk the World walk around Whangarei’s beautiful Town Basin in glorious weather. The formalities resumed with Devotions including the RWNZ Prayer, Song and Creed. Our last speaker was Karleen Everitt who presented a

beautifully crafted speech entitled 'In Her Hands' which wove together her personal story; her challenges and aspirations; and her work with women and her community locally, nationally and globally.

There was time before lunch for a report on the ACWW Conference in Melbourne earlier this year, an update from the RWNZ Board and a Soapbox session. The perfect note on which to end this excellent Conference was provided by Sue Higgins who had crafted a poem for the delegates which is reproduced here for your amusement.

No report would be complete without a mention of food as it was an integral part of the Conference theme. Organising Committee Members had sourced local produce to be included in our meals. They had worked with the Chef to design the menu to focus on this local produce and the results were delicious. It was a very special part of the Conference experience.

Lastly, thank you to the Organising Committee Members for all their hard work in presenting a wonderful event and for making us feel so welcome at A Taste of Northland: Food, Land, People.



Speaker Karleen Everitt



Here is the fantastic National Conference Organising Committee taking a bow at the end of the Conference. Many thanks to Pauline Hilliam-Olsen, Region 7 Leadership Councillor and Area Committee Chair (Dargaville, Individual Member); Cynthia Williams (Kaikohe Branch); Noelene Price Quedley, Secretary (Kouauro Branch); Sherrill Dackers (Individual Member, Whangarei); Mary Dale-Taylor, Treasurer (Whangarei, Individual Member), Christine Pikett (Makarau Branch).

'T'was 1925 when the gathering took place
Of a group of concerned ladies
With hearts for the rural space

They recognised the barriers of living rurally
And determined to be large,
in thought, in word and deed

And so the work began
with services simply given
To challenge assumptions of the day,
the issues – and politicians
Supporting our rural communities
is our arching role
With equality all things,
our never ending goal

Our rich and vibrant history
of women bold and brave
Continue in our work today
Straight forward and unafraid

We've earned the respect of many
We connect and collaborate
with other likeminded stakeholders
We work and communicate

So thank you to Pauline and your team
For bringing us to the North
To share in fun and fellowship
is of the highest worth

We've heard from a range of speakers
Been challenged and informed
Been reminded of the grandeur of Nature
And watched the Dalmatians perform

As we all depart today we celebrate
That in the big things of life
we are one

We'll look forward to seeing you next time,
safe travels everyone.



Dargaville Dalmation Cultural Club



National Chair Penny Mudford; Equal Employment Opportunities Commissioner Dr Saunoomaali'i Karanina Sumeeo; National President Fiona Gower; Region 7 Leadership Councillor and Area Committee Chair Pauline Hilliam-Olsen



National President, Fiona Gower with speech competition entrants Lorna Crane, Gloria McHutchon, Rosemarie Van Der Poel and Shirley Read

COMPETITIONS

The Cora Wilding Scrapbook competition was keenly fought and entries were on display at morning tea for Members to view. Again the judges were impressed by the quality and ingenuity shown by the entrants. The prize winners were:

- Lorna Davies from Midhurst Branch, Region 6
- Melva Robb from Pelorus Sounds Branch, Region 3
- Margaret Vickers from Midhurst Branch, Region 6

There were seven entries for the Wool Competition and the winners were:

- Helen Bayliss, Individual Member, Region 6
- Mary Read from Toko Branch, Region 6
- Margaret Vickers from Midhurst Branch, Region 6

The theme for this year's writing competitions was "Changes you have experienced in your life" with the focus to be on historical change, rather than personal change. There were two Awards presented. The winner of the Marlborough Short Story Prize was Melinda Price from Kenepuru Branch in Region 3 and John McTavish of the Rimanui Branch in Region 5 won the Olive Burdekin Advanced Writing Prize.

101 Ways with Wool Expo

MARLBOROUGH A&P SHOWGROUNDS, BLENHEIM

At the end of March, I travelled to Blenheim to join Region 3 Members at the 101 Ways with Wool Expo. Despite the challenges facing the Top of the South community in the wake of the Tasman bush fires, the inaugural Expo was wonderfully organised and creatively put together. For two days, the Marlborough A&P Showgrounds were filled with the bustle of families, local stallholders and vendors who'd travelled great distances to be there.

Stretches of tents surrounded an Irish Shamrock band and food trucks, while children from local kindergartens in high-vis gathered around the shearing shed to watch a boy not much older than themselves expertly handling the wool flying off his father's shears. In search of shade, people retreated to the sheep pavilion and found themselves surrounded by floral arrangements, various breeds of sheep and woollen dream catchers hanging from the roof.

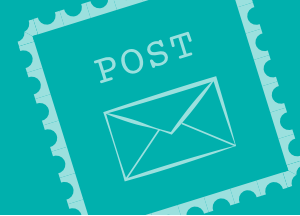
From sheep to shearing, wedding dresses to coffins, baby beanies to multi-coloured yarn, the Expo successfully showcased the versatility and sustainability of wool. There was a fantastic sense of community and it was a privilege to meet some of our long-standing Members from Region 3. I even had the opportunity to walk in a fashion show celebrating the journey of wool from the shearing shed to the catwalk.

Thank you to Melva and Glenda Robb, the Creative Fibre Guild and to all the Members who welcomed me so warmly.

Nora Maarleveld
Communications and Marketing Assistant
RWNZ National Office



ANNUAL GENERAL MEETING POSTAL VOTE RESULTS



The results of the Remits passed by postal vote following the Annual General Meeting 2018 have been announced.

There was a high level of participation in the postal voting and the National Board very much appreciates the time Members gave to consider each of the Remits and to vote. In accordance with the Rules, the results were validated by the RWNZ Returning Officer and have subsequently been received by the National Board.

The results declared by the Returning Officer are:

The following were Adopted:

1. Minutes of the Annual General Meeting held on Monday, 20 November 2017.
2. Remits presented to the Annual General Meeting held on Tuesday, 20 November 2018
 - Public Policy Remit 1: Waste Minimisation and Product Stewardship
That Rural Women New Zealand develops a national project in 2019, in collaboration with the Ministry for the Environment, to encourage greater consistency of uptake of waste minimisation and product stewardship programmes throughout New Zealand.
 - Public Policy Remit 2: Income Support
That Rural Women New Zealand renews its pressure on Government to obtain an increase of \$100 in the minimum amount able to be earned before income support (benefit) payments are reduced by the Ministry of Social Development.
 - Public Policy Remit 3: International Gender Instruments
That Rural Women New Zealand Inc urge the New Zealand Government and policy makers to take into consideration the recommendations in United Nations work, in particular the CSW62 Outcome Document, the CEDAW Report, the Universal Periodic Review and the Sustainable Goals and to include Gender Impact Analysis and Rural Impact Analysis of all policy and legislation to ensure equity for our rural women and children and therefore our rural communities.
 - Public Policy Remit 4: Climate Change
Noting the Climate Change will affect rural women and communities, Rural Women New Zealand Inc. urges the Government to ensure that the proposed Climate Change Commission carries out both a Gender Impact Analysis and Rural Impact Analysis on its work; supports the need for recommendations on economically viable measures the farming community can do to reduce our impact on the environment and climate change.

- Public Policy Remit 5: Visitor Levy
That Rural Women New Zealand recommends the Government imposes a \$100 conservation/environment levy on all visitors entering New Zealand.
 - Public Policy Remit 6: Funding for RTLB Service
That Rural Women New Zealand urges the Minister of Education to increase funding for the Resource Teachers of Learning and Behaviour Service to ensure that every child who is experiencing learning difficulties is assessed early (after the 6-year net) by trained RTLBs. Furthermore, that every child, who is assessed as needing specialised teaching to overcome barriers to their learning, be provided with that assistance and support within the school system, at no cost to their family.
 - Public Policy Remit 7: Driver Drug Testing
That Rural Women New Zealand urges the Government to ensure that testing drivers for impairment by illicit substances be mandatory.
 - Internal Policy Remit 1: Suffrage 125
That Rural Women New Zealand celebrates Suffrage 125 by developing a publicity plan over the next two years to not only ensure that all eligible women in their area are enrolled for both local and central government election rolls but to also support them to always vote.
 - Internal Policy Remit 2: Tarrant Bell and Tataenui Bell
That Rural Women New Zealand hold the Tarrant Bell and Tutaenui Bell Public Speaking Contests annually at the RWNZ AGM event held in Wellington in November.
3. 2018 Annual Reports
 - Executive Reports
 - National Finance Chair Report
 - Annual Board Reports
 - Annual Leadership Reports

The following Remit was Not Adopted:

- Public Policy Remit 9: Reduction of Microfibres and the Promotion of Natural Substitutes
That Rural Women New Zealand Inc. should lobby the Government and Schools to use natural fibres in school uniforms over harmful plastic microfibres.
- Public Policy Remit 8 was withdrawn and no vote was required.

The approved Remits now form part of the work programme at every level of our organisation and the National Board looks forward to reporting on the progress of these through our regular communications and at this year's Annual General Meeting being held later this year in Wellington on 23 November 2019.



ABOVE (from left): Christine Pikett and Joan O'Keeffe; Penny Mudford and Gail Commens, Area President South Pacific; Beverly Forrester and Sharron Davie-Martin.

ACWW TRIENNIAL CONFERENCE

MELBOURNE // 2019

Seventeen members of Rural Women New Zealand attended the ACWW Triennial Conference in Melbourne. I would like to acknowledge and sincerely thank the delegates for their attendance, hard work and the amazing team spirit shown throughout the whole Conference.

Opening Ceremony:

The Junior Country Women's Association (CWA) Members carried the flags of the presiding delegate countries into the venue. The keynote speaker was Melissa Fletcher, CEO of Fletcher International Exports, the largest meat processing company in Australia. I found Melissa a very inspiring person. She is a woman working in a very male-dominated industry and she is also of aboriginal descent. She walks with and works by very strong ethics and personal values. She is also involved in training and providing hands up support to the unemployed.

Report from World President Ruth Shanks and Address from CEO Tish Collins:

Ruth Shanks presented her report to the delegates and Tish Collins read aloud a Letter of Greeting from New Zealand's Minister for Women, Julie Anne Genter.

World Conference 2022:

Her Majesty Queen Aziza of Malaysia introduced arrangements for the World Conference 2022 in Kuala Lumpur. It will be held at the Palace of the Golden Horses. The Conference dates are 19th-26th May 2022.

Workshops:

A series of informative and inspiring workshops were held on days 1 and 2 of the Conference. Some of the workshops were the administrative business and advocacy matters for the ACWW World office. Others were presented by invited groups who came to speak about their work in community based change-making.

Sustainable Development Goals (SDGs) Workshop:

The clearest message I took from this workshop is that as we carry out our work, we need to make conscious links back to the sustainability goals; they go hand in hand. The question for New Zealand in general is where does it sit with its achievements in relation to the SDG Dashboard? We need to understand the Goals and share them with others too.

Entertainment Evening:

This included a fashion show by a local woollen mill, the launch of the ACWW 90th commemorative year book and RWNZ had the honour of presenting the She Shears movie to the delegates. This film was well received by everyone.

Keynote Speakers – Sandi de Wolf and Kelly Nash:

Sandi de Wolf spoke on the topic of A World Without Domestic Violence. Kelly Nash gave a hilarious presentation which delivered an incredibly powerful message around the issues facing young women in society today.

Global Survey on the Living Conditions of Rural Women:

Overall, there was a disappointing response rate to this survey. Although it provided a baseline and a starting point, there were only 65 responses from New Zealand. I have asked the World Office to provide me with the results. This survey will be repeated in the future and RWNZ will be strongly encouraging it to be completed more comprehensively as this data is valuable for our policy work.

The three biggest issues arising from the survey were:

1. Climate change issues
2. Affordable energy concerns
3. Access to affordable healthcare



ABOVE (from left): Noelene Quedley and Fiona Gower ready for voting; Beverly Forrester with Jo Ellen from Almond USA; Tish reading out the message from Minister Genter to the conference; Fiona, Wendy and Jenny at Resolution 4.

New Board Election Results

These were Announced to the delegates. Committee appointments were made at the first Board meeting, but we have not had these confirmed as yet.

Activities of the last day:

The morning was taken up completing overflow business and the last remaining reports were presented. The Closing Ceremony took place after lunch followed by various Area Committee meetings.

RWNZ Fundraising Efforts:

Our signature Aftersocks and the RWNZ Peg bags were on display for purchase. We sold 29 pairs of socks and 4 peg bags at \$25.00 AUD each, so we made a good amount of money for the Adverse Events Relief Fund. The wonderful silver fern scarves that Beverley Forrester sourced were very popular, we sold nearly all of ours and made \$330.00 AUD for the Pennies for Friendship Enabling Fund.

Key Conference Messages:

- Actively promote the Women’s Empowerment Fund
- Actively Support the Pennies for Friendship Enabling Fund

Areas of Priority Focus for the Women’s Empowerment Fund:

- Education and Capability Building

- Nutrition, Good Health and Wellbeing
- Sustainable Agriculture, Training & Development
- Income Generation and Livelihood
- Sustainable Water, Sanitation and Energy
- Maternal and Reproductive Health.

Resolutions, Constitutional Changes and Policy Resolutions:

There were 18 resolutions, 5 Constitutional changes and 13 policy resolutions made.

RWNZ were involved in two of them with Kerry Smith seconding Resolution 12 - Domestic Violence.

I moved our amendment to Resolution 14 - Gender Sensitive Health Care. We will ensure all Resolutions are available for members to view, and we will be actively working on these as well.

South Pacific Area Conference 2020:

The Conference will be hosted in Port Moresby, Papua New Guinea on the 11th -17th June 2020.

There is a Facebook page: ACWW SPA PNG2020. The aim is to have the programme available after July and registrations open after Christmas. The Conference theme is “Opportunities and Achievements in the Pacific”.

*Fiona Gower
National President*



ABOVE (from left): Kerry Smith and Jeanette Tarbotton, ready for voting; Fiona Gower, Ann Adams, Penny Mudford and Elizabeth O'Dwyer at the CWA NSW Evening; Ann Irving and Colleen Tiller in the cuppa queue; Alex Thompson and Margaret Millard taking a well-earned break.

ACWW Women Walk the World

Monday, 29 April was Associated Women of World Day (ACWW). Each year people worldwide celebrate ACWW's international network by joining together to Walk the World. By walking locally we are thinking globally.

The aim of each of these walks is to raise awareness of ACWW's work, to promote ACWW and raise funds to help in its work of raising the standard of living of rural

women and their families through education, training and community development programmes, and supporting educational opportunities for rural women and girls. ACWW also works to eliminate gender discrimination.

RWNZ Branches throughout New Zealand held events to mark Women Walk the World. Although, the weather had been a little unpredictable, it has been no deterrent to our Members.



◀ KOROKIPIKO

Members from Korokipiko Branch in Region 4 walked along the West Shore waterfront in Napier into a stiff morning breeze to raise funds for 'Pennies for Friendship'. The walk back was much easier. Was it the hot drink or wind at their backs that helped them the most on the return journey?

Photo: (At front) Robyn Kilmister, Anne Finnie, Jenny Ballantyne (back) Trish Sturgess and Hazel Pentreath

FORDELL MANAGAMAHU

Members from the Fordell Mangamahū Branch held their walk on Sunday, 28 April. Despite the ground being a little slippery and quite steep in parts, 31 people took part in a five hour walk which at its highest point reached 2200 feet above sea level. There was also a less vigorous option and quite a group took part in a garden ramble near the Harris' homestead.

DARFIELD ▶

Members of Darfield Branch enjoyed their walk around Lincoln and reported, "That is not a hockey stick I am carrying but an umbrella - sadly needed on the day as we had to cut our walk short at 7km when the real southerly arrived with heavy rain and wind. We took a tour of historic places in Lincoln which was very interesting as only remnants remain of the town's vibrant past when it was a major transport hub and a major supply town to a large rural district with everything you might need - even an undertaker. Apart from a few old restored cottages the only standing relic is the university. The old town is now only a suburb."

Thank you to Lorraine Sheen, Darfield Branch for this article and photo of Heather, Anthea, Lorraine, Maureen, Carol, Jill, and Mary of Darfield Branch.





◀ FOREST RESERVE & KOURAWHERO

Once again Forest Reserve and Kourawhero Branches of Rural Women New Zealand joined together for a short walk in recognition of ACWW Women Walk the World Day, 29 April 2019. The occasion was Forest Reserve's monthly meeting on Tuesday 16 April 2019.

On this occasion the locality was in the Warkworth area - Parry Kauri Park in Warkworth. There are some large kauri in the Park and fortunately these seem so far to have not been affected by kauri dieback disease. The largest tree is currently fenced off so walkers cannot get close to it.

Margaret Smiley, Marie Alpe, Jill Cotter, Noleen Logue and Betty Came from Forest Reserve were joined by Noreen Moore, Rose Edgerley, Alison Woodcock (and Alison's husband) from Kourawhero for the short round trip through the kauri forest. It was a fine afternoon, the boardwalk makes for easy walking and we were impressed by the quality of the bush. A rare treat was the sight of a red rata in flower. A very pleasant afternoon walking in good company and listening to the bird song.

Two members Geraldine Taylor and Isobel Greenwood could not take part as they were minding grandkids so they walked on Te Arai beach instead.

Before the walk we had a guided tour of the very impressive Textile Room in Warkworth Museum. A trading table held over lunch and donations raised funds for ACWW.

Thanks to Marie Alpe for this article and photo.



◀ COLVILLE

Women Walk the World in Thames NZ were joined by the Thames Senior Walkers on Women's International Day on the 8th of March, and walked around the foreshore looking out into the Hauraki Gulf. It was an hour's walk to return to the Mall for a cup of tea or coffee together.

Thank you to Colleen Tiller of Colville Branch for this report.



NATIONAL OFFICE ▶

National Office held its first ever Women Walk the World event on Monday, 29 April. National Office Staff, Members from Region 4 and invited guests walked from Te Papa along the Wellington waterfront in calm weather. We wore special rosettes in suffragette colours and an ACWW logo to remember and celebrate women walkers of the past and future.

Our walk ended at He Tohu/National Library where we were viewed the Suffrage Petition. Our last port of call was Parliament Buildings where we were hosted by the Prime Minister, Jacinda Ardern, for afternoon tea. Ms Ardern is an avid walker, although she admitted that her current job curtails that somewhat. It turns out that walking runs in her family: her great-great grandmother was a world champion "pedestrian", as they were called in those days, and also one of the signatories to the 1893 Suffrage Petition. It was a very special afternoon.



National Fielddays® at Mystery Creek took place between Wednesday, 12 and Saturday, 15 June. It was a spectacular affair with every kind of farm and agricultural equipment imaginable on display. RWNZ and NZI shared a large stand just inside the entrance to the Health and Wellbeing Hub and caught all the incoming foot traffic.

NZI's stand promoted the NZI Rural Women NZ Business Awards 2019 which are currently open for entries. It featured a large Prize Wheel and lucky winners won instant prizes including products from previous NZI Rural Women NZ Business Award Winners, while some won the opportunity to go into the Supreme Prize Draw, again with the chance to win beautiful products from previous Award Winners.

The RWNZ stand's backdrop was a giant wall listing some of the work of rural women. Inevitably, as soon as any of our visitors looked at the wall, they identified the many and varied roles that each undertakes in their busy rural lives.

RWNZ also ran a series of surveys. The topics were Rural Communities, Health, the Environment and Rural Services. The questions were drawn from responses given by Members to our earlier Members Survey. The National Office is now processing the information gathered during Fielddays® which will be used to inform our policy and submissions work.

Visitors to the stand included people from all across the country the Prime Minister and several sitting Members of Parliament. RWNZ would like to thank former Award winners and Members who volunteered their time to help on the stand and a special thank you to Michelle Burdett, Jon Watson (pictured with the prize wheel), and the NZI team for their ongoing support and partnership.







Casting for Recovery

RETREAT

MARCH 2019

I was thrilled to receive information and an application from Breast Cancer Support Services Tauranga for Casting for Recovery (CFR) last year. I had heard about it and seen a snip-it on tele. I promptly completed my application and to my surprise and delight was accepted as a participant for the retreat to be held in February 2019.

The weekend finally arrived and I headed off with a couple of passengers also attending from Tauranga. We were all very excited. The moment we arrived we were gifted an incredible Pamper Pack put together by the local Waipa King Country Rural Women. That's when it started and throughout the weekend we were treated and pampered. Heartfelt workshops were held, we had fun persevering with fly casting practice, fishing gear fashioned (all previously sized especially for us before arriving), a makeup makeover, pampers including massage and reflexology treatments, a swimming pool and spa. We had time to talk and get to know the other girls attending. Make friends. Sharing stories is therapy. And time to get to know the wonderful volunteers who greatly outnumbered the participants.

All the meals including morning and afternoon teas were delicious – the Master Chefs worked tirelessly all weekend and did an absolutely excellent job of trying to add a few kilos on to each of us. Entering the kitchen was out of bounds! I wish I could thank all the volunteers individually but I didn't get all their names. I must sincerely thank Wendy and Craig Caldwell and our

facilitator Sue Hall - they are kind and amazing people. The work and co-ordination behind the scenes into making our weekend so wonderful is hidden away but I know it is an enormous task. We also had the pleasure of the company of visiting co-ordinators of the Casting for Recovery in the States at our retreat. They were awesome ladies.

Sunday morning was our special day on the river with our fishing buddies – volunteers, some who also travelled from distance to be our guides. My guide was wonderful and very discrete with his laughter when I cast out my line and the whole rod and reel flew off out of my hand! Thank you from all of us novice would be trout catchers. We will remember “tight lines” and the wonderful experience of being on the river – the peace and beauty.

It is not only the volunteers who need thanks but enormous gratitude must be given to the organisations and individuals who generously make financial donations and other donations to make these weekends possible. Thank you.

I came away from the weekend walking on clouds. My heart and soul had been invigorated and inspired. When I was diagnosed with breast cancer I never said “why me?” rather I thought “why not me?” It's not the end of the world ... It's the start of a new one. I am more grateful than ever before and every day is special. And our retreat was far more than special. Thank you all again.

Anna Stevenson, Tauranga

CALL FOR REMITS FOR THE AGM 2019

The Rural Women New Zealand Annual General Meeting (AGM) 2019 will be held on Saturday, 23 November 2019 in Wellington as part of the Summit.

Pursuant to RWNZ policy, the RWNZ National Board

is calling for submissions of proposed Remits to the National Office by Tuesday, 23 July 2019.

The RWNZ Remit Template and Guidelines are available on the Members Zone of the new RWNZ website.

PAGAN KARAURIA

SHEARING SUPERSTAR

The journey from being a little girl carted along by her Dad to the shearing shed, to competing in the Golden Shears, has been a labour of love for Pagan Karauria. Shearing and wool handling runs deep in her family. Her father, Dion Morrell, and both grandfathers held shearing records. Pagan's mother, Tina Rimene, is a world teams title-holder and three times Golden Shears winner in wool handling. In this family, the apple hasn't fallen far from the tree.

Pagan began competing in junior wool handling around 2005 having been coached by her mother. Tina set a high standard for her daughter. "I actually wanted to be a shearer but my mother used to set me a whole bunch of goals before I was even allowed to get on the stand. So, by the time I was 19 or 20, I was quite a good little wool handler."

Fast-forward to 2018 when Pagan became one of the stars of *She Shears*, the highly acclaimed documentary film, following five women shearers as they chase their dreams of winning at the Golden Shears. Being both a shearer and wool handler is a rare combination, being a champion at both even rarer still. You can hear the commitment and passion in Pagan's voice when she talks about her work. It wouldn't be possible to compete at the highest levels of the shearing industry without it.

It's been a big year for Pagan, during which she has achieved Master Wool-handler status, won the inaugural New Zealand Shearing Championships Women's Final in Te Kuiti and in winning at the Golden Shears, secured herself a place in the New Zealand team to compete at the World Shearing and Wool-handling Championships in France. To cap it off, Pagan recently earned the title of Rural Sportswoman of the Year.

Pagan exudes the same calm, humble determination over the phone as she does on stage at Golden Shears. She has overcome obstacles not faced by many others in an industry that is so physically taxing and demands strength and skill to perform every time.

In 2008, Pagan's spine was shattered in a car accident on her way to work. Reflecting on the accident 11 years later, Pagan attributes her recovery to her sheer determination and stubbornness. "When I got out of my accident, I was told that I wouldn't shear again and the rest of it. And that was probably the biggest mistake that my doctor could've made because I turned it into a bit of a goal. 'Well, I actually think I CAN do this,'" she chuckles. "So I spent the next few years in the gym with a physio and with my dad on the road. It took five years to get me back in the shed full time."



I asked Pagan what it is like, after all the challenges she's faced, to compete in a final at Golden Shears. She tells me it's a privilege to have your name on that board. "When you're travelling the world chasing shows, you see a really good side to our industry that can sometimes be missed. Being surrounded by people who have the same passion and drive as you...I love it.

"I try not to miss any of Rowland Smith's shears. I sit there in the crowd and watch everything he does because he's so professional, he really is. I know it sounds crazy but I've taken a lot from how he shears and put it into my wool handling and had exceptional results in the last 12 months."

At work, Pagan is extremely aware of the importance of sharing her expertise with the next generation of women in the wool industry. "I have quite a following of girls at the moment who I've been training in both shearing and wool-handling. One of the biggest things is teaching them how to be leaders."

Training provided by the wool industry itself has markedly decreased over the past five to six years. Pagan believes that shearers and wool-handlers are now feeling the impact of assuming responsibility for training the next generation. On-the-job training is dangerous, especially when dealing with machinery and live animals in the course of a 12 to 14 hour working day.

"There's a lot of pressure on the whole team. I believe it's crushing our youth. Young people who aren't brought up in this environment don't respond well to the lack of training. I was raised in it, so as a little girl I got used to getting up at 5 o'clock in the morning and getting home at 7pm. If you've never done that before, the first day's work can be pretty horrendous."

Pagan is looking forward to France. She will spend some time preparing for the Worlds in Scotland and Europe before joining the team in Le Dorat for the competition in July. Even on the other side of the world, it will be a family affair. Pagan's stepmother is the manager of the Swiss shearing and wool handling team and her little sister is in the Swiss team. For Pagan, winning a World Championship title would be the perfect way to end an outstanding year.



East Coast Farming Expo

6-7 MARCH 2019 // WAIROA A & P SHOWGROUNDS

Anne Finnie and Tamzin Coull from Korokipo Branch had a trade site promoting Rural Women NZ at this Expo.

With only two branches in the wider Hawkes Bay area and knowledge of none in the Gisborne area we felt it was a good opportunity to showcase Rural Women NZ and to network with others.

The site included:

- Information on the scholarships/bursaries Rural Women NZ and Korokipo Branch offer.
- Aftersocks and Peg Bags for sale in support of the Adverse Events Fund. We sold 8 peg bags and 3 pairs of socks.
- A giveaway each day of a pair of socks or a peg bag with an Express magazine so we could engage the attendees and other stall holders.
- Express Magazines, Rural Women NZ bookmarks, Business cards with the website address on for people to take away.

We found our presence at the show a great opportunity to network with:

- Meka Whaitiri, MP for Ikaroa-Rāwhiti, Labour Party
- MPI
- Ospri
- Federated Farmers Hawkes Bay
- NZ Police
- Caitlin Metz, Rural Connectivity Group and an individual member of RWNZ based in Whangarei.

Knowledge of Rural Women NZ was limited, including brand recognition. We engaged with a wide spectrum of people and many were interested in knowing more about Rural Women. For example:

- We were able to talk to Mana from Raupunga about scholarships/bursaries that may be available to her daughter going from Wairoa College next year to study Dentistry in Otago, also about NZI Rural Women NZ Business Awards as she is involved with a relative that has a flower nursery operation.
- We spoke to some Agri Business Students from Napier Boys High School about the Hawkes Bay Agricultural Bursary.
- We spoke to a lady who had been actively in WDFP to presidential level who was no longer involved.
- Maureen, a local wool buyer for Kells Wool, told us about her participation in “stilettos to shears” being held as part of the Hawkes Bay A&P Show in October as a fundraiser for FarmStrong.
- Sue Wilson the event organiser is an individual RWNZ member – a number of the ladies we engaged with were keen to get together on an irregular basis to network. Details will be passed on to Sue.
- We collected aluminium tabs from the drinks supplied by neighbouring site holder AON for our project that assists Hawkes Bay Special Olympics.



REGION 1 CONFERENCE & WORKSHOP

I had the pleasure of attending the Region 1 Conference in May, accompanying RWNZ National President, Fiona Gower. I had not been to Oamaru previously and I was not disappointed – the town is just gorgeous and our hosts, Pat Macaulay, Raewyn van Vugt, Judy Kingan and their team were wonderful.

The Conference had an excellent line-up of speakers who were informative, inspiring and challenging – I must make special mention of the group from a local secondary school. They are our future. They were well-prepared, smart and articulate. Our future is in really good hands.

Not only was the Conference really good, the Leadership Workshop was too. It was great to see several women attending who were not RWNZ Members as the Workshop was open to all women with a rural connection. The Workshop ran over two days and included sessions on media and leadership, speeches and personality profiling and how to use this to create collaborative meetings and outcomes.

Well done and a big thank you to Region 1 for the great few days.

Angela McLeod, Acting Chief Executive

WildJewels

Sisters Amy and Liza Cronhelm are the designers of the Wild Jewels Collection. Their stunning jewellery features sterling silver, freshwater pearls, paua, mother of pearl and gemstones. Visit their website www.wildjewels.com

At the checkout, enter RURALWOMEN to get your special price!

To give back, Wild Jewels helps support The Michael Cronhelm Foundation Trust. The foundation has built a library and a school in Ileret and continues to run these educational facilities in one of the most challenging areas in Northern Kenya. Go to www.michaelcronhelmfoundation.org to find out more and how you could support this project.



Branch News

TUTAENUI BRANCH

Care Packs for Women's Refuge

Ruth Duncan, a member of Tutaenui Rural Women put together some glamour and essential goodies, and along with PJ Banks delivered 10 bags to Women's Refuge. These will be given to women when they are placed in a safe house. The bags were made by Ruth. Tutaenui Rural Women provided the funds to equip the bags. Ruth and PJ enjoyed meeting the Manager of Women's Refuge and learnt more ways that we can help. The card carried a special message from the Tutaenui Branch "When women support each other ... incredible things happen".

Thanks to Jean Coleman of Tutaenui Branch for this article.



ST ARNAUD BRANCH

She Shears Film Fundraiser

In early January, our little group of Rural Women screened the full-length film *She Shears*. The film tells the story of five New Zealand women and their different paths to reach the Golden Shears competition. The film has screened in many small towns and city theatres. We filled our "theatre" for five nights. Rural Women St Arnaud raised \$1,000 as a donation to the refurbishment programme for the Rotoiti Lodge. Two members recently presented the cheque to Russell Ferens, the Director of Rotoiti Lodge.



A very smiley Rotoiti Lodge Director, Russell Ferens, accepts the cheque from St Arnaud Branch Members, Julie Sowman and Marg Hunter.

Anzac Day Commemorations

Our Gallipoli fallen were remembered by many people at the St Arnaud ANZAC day ceremony. Alastair Nicholls led the service and Lieutenant Colonel Anthony Childs, DSD, First Royal New Zealand Infantry Battalion gave the address. Many locals wore their own service medals or those of family members who had been in New Zealand's armed services. Lake Rotoiti School pupils learned about the ANZACs and made poppies in remembrance. These were fashioned into an arch to welcome attendees. St Arnaud Branch Rural Women Members decorated the hall with memorabilia from the era and served a refreshing morning tea so locals could have a good chat.



Poppy Arch – poppies made by pupils of Lake Rotoiti School, decorated by ladies from St Arnaud Branch.

60th Anniversary

Marg Anderson, our Chair, gave a lovely talk as part of the ANZAC ceremony to mark Rural Women St Arnaud's 60th Anniversary. She spoke of the companionship Rural Women gave to local women and their families in isolated areas, and also the varied community service given by the group over the last 60 years. Early meetings were held over a day, children attended, and meetings alternated between St Arnaud and Kikiwa due to the difficulty travelling on the roads.

Thanks to Marg Anderson of St Arnaud Branch for this article.

TAUHEI BRANCH

Easter Get Together & Hat Party

On the 15th April we decided to have a get together for Easter inviting members from our area for morning tea and lunch. As it was such a lovely day we sat out the front of the hall in the sun and had a good catch up with friends and a cup of tea. When the time came for lunch, we very reluctantly moved inside where our visitors judged our scrap book entries for the Cora Wilding competition at National Conference in Whangarei. The competition was to create scrapbooks for entertaining children staying at Ronald McDonald Houses. We all took part in judging the Easter hats that decorated our lunch table.



Peggy, one of our longstanding members, read her speech that she had written for the upcoming competition. Raffles were drawn with everyone going home with a prize. A big thank you to those who came, let's meet again at our Christmas get-together.

CENTRAL TARANAKI PROVINCIAL

AED at Midhurst School

Central Taranaki Rural Women New Zealand members have once again supported the welfare of their Rural Community. The second defibrillator donated by our group has been installed on the exterior wall of the Library at the Midhurst School. The school ran first aid courses for their pupils and then entered a competition run by the Red Cross, and won the defibrillator. Discussions were held between the school and Margaret Vickers from Midhurst Branch with a decision being reached that the AED be installed on an outer wall at the school and be available 24 hours a day for the whole community to have access to.

Thanks to Margaret Vickers of Midhurst Branch for this article.



Margaret Vickers, Patricia Houghton, Nyla Chubb, Lorna Davies, Patricia Old and Gwen Nicol.

WINCHMORE BRANCH

Ladies' After 5 Dinner

In February, Winchmore Branch of Rural Women New Zealand hosted the annual 'After Five Dinner' for the pleasure of RWNZ Members and friends of the District. The dinner, a two-course meal, was attended by 25 Members and 38 people from the wider community area who all enjoyed listening to our guest speaker Dr Jacqueline Rowarth. Dr Rowarth gave a wonderful and very balanced presentation on a wide range of issues facing the rural sector, and we thank her for giving her time so willingly.

Thanks to Margaret Verrall of Winchmore Branch for this article.



OBITUARY - AMY JONES

This is an excerpt from a eulogy given by Margaret Chapman NLM at the funeral of National Life Member, Amy Jones QSM.

“Cathie and Greg, Ross and Alice and all the grandchildren, on behalf of the RWNZ National President, Fiona Gower, the RWNZ National Office

I extend to you all the heartfelt sympathy of the organisation on the passing of Amy. She was quite a lady and I know she will be sadly missed.

On behalf of the South Canterbury Rural Women NZ Members I also extend our heartfelt sympathy - Amy was so much an integral part of SC RWNZ.

When I think of SC RWNZ formerly WDFE, immediately there are 2 names that spring to mind – Ginny Talbot and Amy Jones. Both were formidable ladies, women we all looked up to for advice and guidance in all matters RWNZ. Sticklers for the correct procedure but oh so passionate about RWNZ. Amy maintained her passion for all the organisation stood for right to the end. She liked nothing better than to have a conversation about the importance of RWNZ in our rural communities, what we were up to and what was happening at both Provincial and National level. I think her biggest frustration in the last few years was that everything is now done electronically and no longer did she receive the information via mail but relied on us young whipper snappers to print it off for her and deliver. – which of course we always tried to do.

Most of Amy's WDFE/RWNZ years were spent in SC so we are proud to call her one of our own. She first joined the Fairlie branch in 1961 when she and Eric shifted down from Ruapuna. She quickly moved through the ranks: first of all in the Fairlie Branch, then SC Provincial and finally to National level where she was Dominion Treasurer from 1983 – 1991.

Amy was involved on the management committee of Te Kiteroa, the WDFE rest home in Waimate, and when it was sold, the establishment of the WDFE Scotlands/Te Kiteroa Trust. She was an integral part of setting up of the Life Education Trust and maintained an ongoing interest in this. Jeanette has already mentioned many other ways that Amy was involved with WDFE but I must mention a way Amy supported SC Provincial.

For the past 20 years SC has held a Mid-Winter seminar

in Fairlie. It was only when Amy and Eric moved to Ashburton that Amy has not attended. There was always a seat reserved for her in the front row, and every year she would send Eric along

at 8am to turn on the heating, fill the zip and flick it on. As well he always had to make sure the lectern was there. This was her contribution to the smooth running of our days and very much appreciated.

It was very rare for Amy to miss a meeting or event and if she did we knew she must not be well. Even if it was a struggle she would endeavour to be there – Eric driving her from Fairlie. The SC 90th celebration of RWNZ is a case in point. No way was Amy going to miss it. She dressed up in her furs, Eric drove her down to Timaru and she had a wonderful afternoon even being interviewed by the local media.

I had the personal pleasure of attending an event at Government House in 2006 when Amy was presented with a RWNZ Achievement Award - a proud moment for Amy to have her contributions to RWNZ acknowledged by the organisation and a real privilege for me to be able to share it with her and Eric.

2018 was the first year Amy did not attend our Regional Conference – we missed her sitting there with her notebook, jotting down items of interest and things she wanted to follow up on and also making sure we remembered to go ‘into committee’ when the finances were presented.

At the beginning of every WDFE/RWNZ meeting Amy attended over her 60 plus years of membership, the Womens Creed would be recited, be it at Branch, Provincial or National level. The words of the creed have the ability to centre and focus everyone on what is important in our lives.

Perhaps this is even more so in the light of the events of last week. I would like to now invite WDFE/ RWNZ Members to stand and recite with me the Creed one last time for Amy.

Thank you Amy for a life of ‘Service Simply Given’.

Rest in peace.”

With Love We Remember



Amy Jones (QSM)
13 December 1932 - 16 March 2019

'I AM HOPE' GUMBOOT FRIDAY

Congratulations to Rhiannon Wharepapa who won the 'I Am Hope' Gumboot Friday Photo Competition.

Rhiannon, who works at Vercoe Insurance Brokers in Morrinsville, entered this great photo of her workmates who were fully committed to Gumboot Friday. Thank you for the variety of gumboot options presented and we noticed that the light haired man (seated) appears to be taking the challenge particularly seriously.

A copy of Alana Scott's 'The Gut Friendly Cookbook' was sent to Rhiannon and her team.



Rural Women New Zealand would like to thank:

Premier Partner:



Sponsors:



Special Offers for Members

MILLWOOD PRESS - FUNDRAISING OFFER

Millwood Press' Sophie Siers, NZI Rural Women New Zealand Business Awards Creative Arts Winner 2018, is offering branches an opportunity to use her books as a fundraiser. The proceeds of the sale of the books could either be donated to the RWNZ Adverse Events Relief Fund or to your local Branch. Fundraising options are outlined below.

Seven paperback titles: *Allis the little tractor*, *Allis helps on the farm*, *Do you want to Gallop with me?*, *Rosie Joy Here There and Everywhere*, *Arlo and the Ginkgo Tree*, *The Gift Horse*.

Retail price: \$20.00 / Cost to branches: \$14.00 = \$6.00 profit per book

Hard back title: *Dear Donald Trump*

Retail price: \$28.00 / Cost to branches: \$20.00 = \$8.00 profit per book

- Option 1: A box with 10 of each title to sell directly. The final invoice will be provided by Millwood Press once sale numbers have been determined. Unsold books can be returned.
- Option 2: A set of 1 of each of the books to use as samples and collect orders. Millwood Press will provide the books for sale once numbers are confirmed.
- Option 3: Use the code 'RURAL' at the Millwood Press website checkout to automatically donate \$6 or \$8 (depending on the order) to the National Office for distribution into the Adverse Events Relief Fund account.
- Members can also select a combination of all three.

Members can view the books on the website, www.millwoodpress.net Should you have any questions, please contact Sophie at books@millwoodpress.com or by telephone on (06) 874 6664 or 021 082 00788.



MILLENNIUM HOTELS & RESORTS - 20% DISCOUNT ON ACCOMMODATION

Millennium Hotels and Resorts are pleased to offer Rural Women New Zealand Members 20% off the best flexible room rates, on the day of booking, at any of our 20 hotels, New Zealand-wide.

Registration is by special invite only and can only be booked via one of the following options:

- Book online at: www.millenniumhotels.com, use promo code STAYMCK.
- Phone the hotels direct and quote STAYMCK.
- Freephone call: 0800 808 228.

Additional seasonal special offers may be offered at selected Hotels. Rates can be accessed for all your personal and business travel. While staying there, you are invited to join up to the My Millennium loyalty programme. If you stay at any of the participating hotels worldwide and you will automatically earn My Points with every qualifying spend. The more you stay, the more you earn.

Further benefits available to AA members - Book direct on www.millenniumhotels.com, register your AA membership and swipe your AA Smart fuel card on check out every time you stay with Millennium, Copthorne and Kingsgate Hotels. You will save 10c per litre on every \$100 spent on accommodation. To find out more visit www.aa.co.nz/aasmartfuel





RWNZ Approved Grants & Bursaries Recipients

TERTIARY BURSARY

- Shannon Godfrey
Warkworth - Region 7 ✓
- Tahlia Kerridge
Morrinsville - Region 6 Greater Waikato ✓

DIAMOND JUBILEE AGRICULTURAL TERTIARY BURSARY

- Samantha MacGregor
Palmerston North - Region 4 ✓

EDUCATION FUND

- Terina Geddes
Middlemarch - Region 1 ✓

TEXT BOOK GRANT

- Patrick Back
Eltham - Region 6 Taranaki ✓
- Oliver Wilson
Hawkes Bay - Region 4 ✓
- Lorenzo Hewison
Greytown - Region 4 ✓
- Peter Hooper
Tuakau - Region 6 Greater Waikato ✓
- Caitlyn Rose des Landes
Napier - Region 4 ✓

Discover nature's
skin calming miracle.

ORGANIC REMEDIAL SKIN REPAIR

Peonies are arguably one of the world's most beautiful flowers, but their roots are truly miraculous. Pure Peony combines science and the powerful ingredients of the Peony root to help heal problematic skin fast.



Made in New Zealand
www.purepeony.com



purepeony™

ADVERSE EVENTS RELIEF FUND

The Rural Women New Zealand Adverse Events Relief Fund (AERF) was established to provide assistance to individuals, groups and communities in need after adverse events and natural disasters.

To help grow this fund, there are two products for sale, the proceeds of which go directly to the AERF:

RWNZ's pure wool, New Zealand-made **Aftersocks**, available online at www.aftersocks.nz or from the National Office.

Our popular **peg bags**. Each peg bag is \$25.00 plus postage, available to purchase from the National Office, or visit www.ruralwomennz.nz

Alternatively, donations can be made directly into the Adverse Events Relief Fund by bank deposit to the following account:

Account Name: **Rural Women New Zealand**

Bank Account: **06-0501-0778590-00**

Ref: **AERF**



REMINDER - END OF YEAR FINANCIAL REPORTING

Rural Women New Zealand's financial year for 2018/19 ended on 30 June 2019 and it is now time to finalise this year's financial accounts. As part of this process, National Office is tasked with collecting the relevant information from all Branches and Provincials so that we can complete our financial accounts for our Accountants, Auditors and the Charities Commission. As you can appreciate, Office staff have a tight timeframe to get all information in and processed to meet the legal deadlines.

National Office has placed all the forms that you will need in the Members Zone of the new website under the heading Useful Materials and Forms. Should you have any questions or would like assistance in completing any of these forms, please call National Office on (04) 473 5524.

Please note that each Branch and Provincial must provide a bank statement which shows the closing balances of all bank accounts as at 30 June 2019. If your Branch has any term deposits, you will also need a statement of the balance at 30 June 2019.

Each Branch and Provincial will need to hold a meeting in July at which the Annual Accounts can be approved.

If your Branch or Provincial has had no activities over the past year, National Office still needs to hear from you.

Please send a letter stating there has been no activity and a copy of your bank statement by post or email.

Important Dates:

- **Sunday, 30 June:** End of the Financial Year
- **July:** Arrange a Branch or Provincial Meeting to approve your Annual Accounts
- **Thursday, 15 August:** Group Statement of Finances form, Statement of Service Performance form and Independent Reviewer Statement are due at National Office.

For more detailed instructions on how to complete your financial reporting, please refer to the Guide to Financial Reporting documents which is in the Useful Materials and Forms section of the website.

If you would like a set of reporting forms to be sent to you by post, please call National Office to arrange for these to be sent to you. If you have any questions about the reporting forms or what you need to do to complete them, please don't hesitate to call National Office.

Contact details for National Office are:

Telephone: (04) 473 5524

Email: enquiries@ruralwomennz.nz

Post: PO Box 12-021, Thorndon, Wellington 6144

National Office News

In March, office staff completed a Communications Strategy Template for RWNZ and ran a Members Survey seeking feedback on our current communication methods and styles. Lisa represented RWNZ at the Charity Leadership Symposium in early March.

We had a very busy period just before Easter with the launch of the new RWNZ website and in the wake of tragedy in Christchurch, surveying Members, research and preparation of RWNZ's submissions and a media release on the Arms (Prohibited Firearms, Magazines, and Parts) Amendment Bill.

Sadly, Nora finished her contract with RWNZ at Easter to travel overseas and is now living in The Netherlands.

On Monday, 29 April we held our first ACWW Women Walk the World National Office event. The forecast was appalling and we were expecting it to be wet, then windy and then cold or, if we were especially unlucky, all three at the same time. However, the weather held off and our group walked the waterfront in unexpected sunshine. We walked to He Tohu/National Library and were greeted by their staff who showed us our country's founding documents: the Declaration of Independence of the United Tribes of New Zealand 1835, the Treaty of Waitangi 1840 and the Women's Suffrage Petition 1893. We crossed the road to Parliament where we were hosted by Prime Minister Jacinda Ardern for afternoon tea.

Early May involved a large amount of report writing, budget setting, Conference organising, Fielddays® preparations and hosting the National Board and a CARF Meeting.

Preparations also began in May for end of year financial reporting. Sunday, 30 June is the end of the financial year and Linda has been working hard on processing Statement of Service Performance and Statement of Finance documents.

All office staff worked to support the National Conference Organising Committee in Northland with preparations and Angela and Lisa attended the Conference. It was the first National Conference for both and a great opportunity to meet Members and discuss the work of the Office and future ideas.

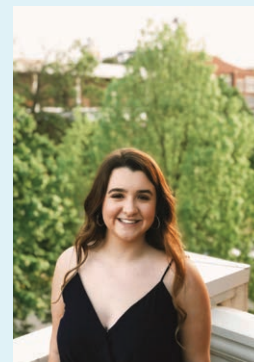
National Fielddays® was held in the week immediately following the National Conference - it opened on

Wednesday, 15 June and finished on Saturday, 16 June. RWNZ shared a stand with NZI and our combined space was very interactive and attracted a great deal of attention. NZI had their Prize Wheel in action which promoted the NZI Rural Women NZ Business Awards where lucky visitors won instant prizes from previous Awards entrants and winners or the opportunity to go into a Supreme Prize Draw. The RWNZ part of the stand featured our (Rural) Wonder Women Wall which celebrated the diverse range of roles rural women undertake.

Meanwhile, Felicity continued to make the world go round by being the friendly voice on the end of the phone, the helpful respondent to all enquiries, general administration extraordinaire and ensuring that Members are supported with resources for Regional Conferences and events. Maree juggled Board Members' schedules and worked with Felicity to prepare for Board meetings, while Linda has been busy processing all bursary, scholarship and grant applications in addition to the regular accounts tasks. Most recently, the National Office has been working on Membership Renewal Packs and this edition of the Express.

Lastly, we have warmly welcomed our new intern, Sara Hairston from Texas, USA, who will be with us for two months.

Hello! I am Sara Hairston and I am so excited to be spending eight weeks as an intern at the RWNZ National Office. I am from The United States, specifically Texas, and am a student at the University of Arkansas. I am going to be a third year Communications major with a minor in Social Work. I am excited to explore the wonderful country of New Zealand during the time I am here. So far, I have gone to my first rugby game, though the rules are still a little fuzzy to me. I have visited Somes Island, taken a hike up Mt. Victoria, and indulged in many, many scones. I plan to visit as much as I possibly can, including Rotorua later in the month. New Zealand has always been my dream place to visit, and working with strong women focused on the betterment of rural communities makes my time here even more special. I am looking forward to working with RWNZ and contributing in any way that I can.



National Office News

MEETINGS & SUBMISSIONS

- March: National Disaster Resilience Strategy and Draft Early Learning Strategic Plan
- March: Rural Education Reference Group (RERG)
- March: 101 Ways with Wool
- April: LGNZ - RWNZ Policy Manifesto
- April: Written and oral submissions on the NZ Police - Changes to Firearms legislation
- April: Golden Shears representatives - 60th Anniversary
- April: Massey University - Intern programme
- May: Region 1 Conference and Leadership Training, Oamaru
- May: Meetings with MPI, Wellington and MFaT, Wellington
- May: Massey University - intern programme
- May: CARF & Board meeting
- May: Meeting with Police Minister Stuart Nash
- May: NZ Vet Association Conference
- May: Meeting with Federated Farmers
- May: Annual General Meeting of Primary ITO
- May: Minister of Rural Communities to discuss issues highlighted at the Region 1 Conference and the Rural Principal's Conference
- May: Discussions with MPI - how RWNZ can support communities affected by M.bovis, rural community hubs and possible pilot areas.
- May: Embassy of Egypt to discuss issues affecting rural women in both countries, how we might be able to support each other and trade opportunities
- June: National Conference, Whangarei
- June: Fieldays®, Mystery Creek

MEDIA RELEASES

- Livestock Rustling Changes Great Start but More Could Be Done
- Rural Women supports Arms Amendment Bill
- NZI Rural Women NZ Business Awards 2019 Launched
- Will Rural Midwives Miss Out?
- Firearm Safety Vital on Opening Weekend
- Queen's Birthday Honour for Rachael Dean NLM
- 2019 Fieldays
- 2019 KPMG Agribusiness Agenda Report
- Farm Debt Mediation Bill Good for Rural Communities.

NOTICE OF ELECTION

Vacancy for South Island Board Member

There will be a vacancy for a South Island Board Member as Sue Higgins has advised the Rural Women New Zealand Board of her intention to stand down at the Rural Women New Zealand Annual General Meeting to be held on Saturday, 23 November 2019. This date is part way through Sue's second two-year term on the Board.

Elections will be held in 2020 for the following positions on the Board as the current holders will have completed their two-year term:

National President, Fiona Gower

National Finance Chair, Jenny McDonald

North Island Board Members, Penny Mudford and Zelda De Villiers

South Island Board Member, Gill Naylor.

Please see the information included with this notice regarding this year's election for a South Island Board Member including important dates, Board Roles and Responsibilities and a Nomination Form.

The important dates you need to know are:

5:00PM - Friday, 23 August 2019

Closing date for nominations and nominee information.

Nomination forms received at National Office after this date cannot be accepted.

Friday, 2 September 2019

Ballot papers will be posted.

5:00PM - Friday, 25 October 2019

Closing date for voting.

Papers received at National Office after this date cannot be counted.

Friday, 1 November 2019

Deadline for votes to be counted by the Rural Women New Zealand Returning Officer, assisted by National Office. Nominees will be advised of the results prior to the AGM.

The Returning Officer - Rural Women New Zealand
PO Box 12-021
Thorndon
WELLINGTON 6144

The Policy regarding Elections and the Rules and Bylaws are on the Members section of the website, however, if you have questions about the elections process, or more forms are required, please contact the National Office.

Kind regards,

Angela McLeod – Acting Chief Executive
Rural Women New Zealand



NOMINATION PAPER

for the Office of Rural Women New Zealand Board Member Nominee - South Island

WE, THE UNDERSIGNED, HEREBY NOMINATE: _____

(Print clearly)

Name of Proposer: _____

Signature: _____ Contact Number: _____

Name of Secunder: _____

Signature: _____ Contact Number: _____

Signature of Nominee: _____

Information for the Nominee:

The nominee is also required to submit the following information which will be sent out to Members as part of the voting papers. Please include your Name, Region, Branch and/or Provincial (if applicable) and a 250-word summary of what you will bring to the role of Board Member. This summary can include such things as your personal background, community involvement, experience in Rural Women New Zealand, your local community and any governance experience. Please also include a high resolution photo of yourself of suitable quality for printing.

Please scan and email completed nomination forms to **enquiries@ruralwomennz.nz** OR return by post to:
The Returning Officer – Rural Women New Zealand
PO Box 12-021, Thorndon,
WELLINGTON 6144

All Nominees, Proposers and Seconders must be financial members of Rural Women New Zealand at the time of nomination. Nomination forms MUST reach National Office by 5:00PM on Friday, 23 August 2019. Nomination forms received after this date cannot be accepted.

BOARD ROLES AND RESPONSIBILITIES

1. INTRODUCTION

- 1.1 The Rural Women New Zealand (RWNZ) Board is the organisation's governing body and is responsible to the Members for the overall governance of the organisation. This includes ensuring the long-term viability, enhancing performance through strategy formulation and policy making.

2. PURPOSE

- 2.1 The purpose of this policy is to provide guidance and to set out the requirements for Board Members.
- 2.2 The guidance in this policy constitutes good practice and must be applied to any Board Member when carrying out their Board duties and activities.
- 2.3 This policy is to be read in conjunction with the RWNZ Rules and Bylaws.

3. BOARD

- 3.1 The Board is responsible for determining the strategy of the organisation through determining the vision for the future; developing the strategic plan for the organisation; and monitoring changes to the external environment which impact the organisation's vision and strategy.
 - 3.2 The Board must develop and maintain appropriate governance policies by which the organisation will be governed.
 - 3.3 It is the Board's responsibility to:
 - 3.3.1 Approve the governance policy documents and organisational position statements, ie, codes of conduct, legal compliance documents, and other significant policies.
 - 3.3.2 Determine the delegations of authority to and responsibility of the Chief Executive Officer.
 - 3.3.3 Determine and appoint committees, as required.
 - 3.3.4 Approve the annual financial budget.
 - 3.3.5 Ensure appropriate risk management systems and internal compliance controls are in place.
 - 3.4 The Board is responsible for the organisation's performance by:
 - 3.4.1 Monitoring the performance of the Chief Executive Officer.
 - 3.4.2 Monitoring the organisation's progress against the budget.
 - 3.4.3 Monitoring the performance of committees.
 - 3.4.4 Approving expenditure that is outside the approved budget and delegations.
 - 3.4.5 Approving and monitoring any major capital expenditure.
 - 3.5 The Board must ensure accountability of the organisation to its Members and other stakeholders through:
 - 3.5.1 Approving and monitoring financial and other reporting to Members.
 - 3.5.2 Monitoring compliance with all legal and statutory obligations, including provisions in the Rules and Bylaws.
 - 3.5.3 Holding the Chief Executive Officer accountable for all delegated responsibilities.
 - 3.5.4 Evaluating the performance and compliance of Board Members with the Rules and Bylaws.
 - 3.6 The Board is responsible for ensuring that an appropriately skilled and qualified Chief Executive Officer is appointed to manage the organisation.
- ## 4. CHAIR
- 4.1 The National President is to chair the Board unless the National President appoints a Board Member to chair the Board.¹
 - 4.2 Where the Chair is not the National President they shall be referred to as the National Chair.
 - 4.3 The Chair is accountable to the Board as a whole.
 - 4.4 The Chair is the formal link between the Board and the CEO and it is the role of the Chair to maintain regular dialogue with the CEO over all operational matters.
 - 4.5 In the event that any matter gives the Chair cause for major concern in regard to the CEO, the Chair will raise the matter with the Board.
 - 4.6 It is the role of the Chair to oversee adequate processes to enable the Board to function properly and effectively discharge its duties in relation to New Zealand law and its own governance policies, including but not limited to:
 - 4.6.1 Developing the Board meeting agenda.

¹ Refer to Rule 6.1c

- 4.6.2 Chairing meetings of the Board.
- 4.6.3 Ensuring the Board complies with its own governance policies and implements its strategic, policy, monitoring and accountability responsibilities effectively.
- 4.6.4 Facilitating all Board members in making an informed and constructive contribution to the Board's deliberations; and
- 4.6.5 Guiding Board deliberations and responses with respect to major organisational priorities and governance concerns.
- 4.6.6 Promoting constructive and respectful relations between Board Members and between the Board and management.
- 4.6.7 Ensuring that the annual performance of the Board and the Board Members are evaluated in a professional and timely manner.
- 4.6.8 Ensuring that the annual performance of the Chief Executive Officer is evaluated in a professional and timely manner.
- 4.6.9 Performing other responsibilities assigned from time to time by the Board.
- 4.7 The Chair must commit the time necessary to discharge effectively their role as Chair of the Board.
- 4.8 The Chair is not empowered to:
 - 4.8.1 assume the role or responsibilities of the CEO
 - 4.8.2 unilaterally change Board governance policies, and strategic directions or Limitations (delegations) Policy;
 - 4.8.3 inhibit the free flow of information to the Board necessary for sound governance;
 - 4.8.4 come between the Board and its formal links with the CEO by altering or controlling flows of information necessary for the Board to appropriately undertake its governance responsibilities.

5. BOARD MEMBERS

- 5.1 Board Members are to be elected or appointed in accordance with the Rules² and Bylaws³.
- 5.2 It is the role of each Board Member to:
 - 5.2.1 Act in good faith in the best interests of the organisation and for a proper purpose.
 - 5.2.2 Exercise due care and diligence that a reasonable person would exercise when carrying out their duties.
 - 5.2.3 Adhere to and uphold the Board's policies and guidelines.
 - 5.2.4 Respect the Board's authority to act, notwithstanding that the Board Member may have offered a dissenting view at the Board table prior to the Board's decision being made.
 - 5.2.5 Act in accordance with their fiduciary duties.
 - 5.2.6 Commit the time necessary to effectively discharge their duties as a Board Member.
 - 5.2.7 Remain informed about the organisation's mission, policies and services, and the range of views of Members about the organisation's operations.
 - 5.2.8 Understand the complexities of the sector in which the organisation operates in order to adequately assess the opportunities and risks faced by the sector and by the organisation.
 - 5.2.9 Respect the confidentiality of all matters, information, discussions and deliberations coming before them as Board Members and not disclose (or allow to be disclosed) confidential information of a sensitive nature gained in the course of performing their duties, other than as agreed by the Board, required by the Rules or as required by law.
 - 5.2.10 Systematically consider information relating to the organisation's performance.
 - 5.2.11 Ensure the organisation remains solvent.
 - 5.2.12 Not improperly use their position or misuse information for the organisation.
 - 5.2.13 Not claim to represent the organisation's views and policies except where explicitly authorised to do so by the Board.
 - 5.2.14 Not make negative public comment about the organisation, its Board, Members or staff; and
 - 5.2.15 Resign as a Board Member if unable to comply with these roles and responsibilities.
- 5.3 Board Members are required to attend Board meetings, National Conferences, emergency meetings and other official functions as required and to prepare for meetings to ensure they are fully briefed on the subjects.
- 5.4 The Board shall allocate each Board Member portfolio areas.

6. FINANCIAL IMPACT

- 6.1 The budget is to reflect any information and training needs that may be required for compliance with the RWNZ Board Roles and Responsibilities Policy.

² Refer Rule 6 - Board

³ Refer Bylaw 7 – Election of Officers

AREA COMMITTEES BY REGION

Region 1 Lower South Island	Position	Contact Email
Pat Macaulay	Leadership Councillor	pat.macaulay@outlook.com
Raewyn van Vugt	Area Committee Chair	whitegold@rivernet.co.nz
Heather Smith		iahesmith@gmail.com
Virginia Broughton		broughtonvp@gmail.com
Sally Hammond		lrsjhammond@netspeed.net.nz
Elaine Sloan		sloanrimu1@xtra.co.nz
Gloria McHutchon		gloria_alexm@hotmail.com
Judy Kingan		jaydeekgn@gmail.com
Margaret Pittaway	Advisory – Ex officio	lochlea@xtra.co.nz

Region 2 Canterbury	Position	Contact Email
Sharron Davie-Martin	Leadership Councillor	sdaviemartin@me.com
Margaret Chapman	Area Committee Chair	mgchapman@xtra.co.nz
Beverley Forrester		forrester@amuri.net
Mary Watson		mmf.wats@gmail.com
Christine Anderson		jcandynz@gmail.com
Margaret Chapman [Hook]		randmchapman@clear.net.nz
Sandra Curd	Administrator	curd@xtra.co.nz
Marg Verrall		r.m.verrall@ruralnet.co.nz

Region 3 Top of the South	Position	Contact Email
POSITION VACANT	Leadership Councillor	
Melva Robb	Area Committee Chair	melva@soundsreflection.co.nz
Diane Higgins	Secretary and secondary contact	dmhiggins@xtra.co.nz
Margaret Faulkner		NO EMAIL
Jennifer Wiese		NO EMAIL
Carolyn McLellan		balmac@xtra.co.nz
Carol Wells		NO EMAIL
Margaret Milne		margarwpt@kinect.co.nz
Dot Dixon		dotsf9@gmail.com

Region 4 Lower North Island	Position	Contact Email
Liz Hancock	Leadership Councillor	liz.hancock@ruralwomennz.nz
Joan Black	Area Committee Chair	joanblack@inspire.net.nz
Jean Coleman	Secretary	ngaios@farmside.co.nz
Helen Clark	Treasurer	trevorandhelen25@gmail.com
Liz Monk		liz.dennis@xtra.co.nz
Leonora Spark		ljnajsark@gmail.com
Pauline Masters		paulinemasters@xtra.co.nz
Shona Field		mtwilliam@inspire.net.nz

Region 5 BOP / Coromandel	Position	Contact Email
Margaret Scrimgeour	Leadership Councillor	margaret.scrimgeour@ruralwomen.org.nz
Sue Vowell	Area Committee Chair	tepudeer@xtra.co.nz
Chris Paterson		chrisjam@xtra.co.nz
Jo Gravit		pandjgravit@xtra.co.nz
Lyn Staples		urwinfarms@xtra.co.nz
Wendy McGowan		rusty_wendy@xtra.co.nz

Region 6 Greater Waikato	Position	Contact Email
Judy Board	Leadership Councillor	judy.board@xtra.co.nz
Malvina Dick	Area Committee Chair	malvinad@xtra.co.nz
Liz Morgan		lizziemorgan36@gmail.com
Karen Attwood		theattwoods@actrix.co.nz
Eileen Barker	Secretary/Treasurer	efbarker74@gmail.com
Susan Black		susblack@gmail.com
Parminder Singh		jjytijora@gmail.com

Region 6 Taranaki	Position	Contact Email
Shirley Read	Acting Leadership Councillor and Area Chair	sdread@xtra.co.nz
Joyce Lawrence	Treasurer	niaruo@inspire.net.nz
Margaret Vickers		r.m.vickers@xtra.co.nz
Jennie Purdon		chrisjen1@orcon.net.nz
Helen Bayliss	Secretary	harrybayliss@xtra.co.nz
Angela Hammond		NO EMAIL
Vivienne (Viv) Grigg		evgrigg@hotmail.com

Region 7 Top of the North	Position	Contact Email
Pauline Hilliam-Olsen	Leadership Councillor and Area Chair; Facebook/Newsletter	pauline.hilliam@xtra.co.nz
Sherrill Dackers		sherrillmd@xtra.co.nz
Cynthia Williams		cynwilliams818@gmail.com
Mary Dale-Taylor	Treasurer	m.t.dale-taylor@xtra.co.nz
Noelene Price-Quedley	Secretary and secondary contact	noeleneq@hotmail.com
Christine Pikett		NO EMAIL



LEADERSHIP COUNCILLORS

Region	Name	Contact Phone	Mobile	Contact Email
1	Pat Macaulay	03 484 7006	027 201 6921	pat.macaulay@outlook.com
2	Sharron Davie-Martin	03 315 8508	027 475 4129	sdaviemartin@me.com
3	POSITION VACANT			
4	Liz Hancock	06 308 8812	027 486 0845	liz.hancock@ruralwomennz.nz
5	Margaret Scrimgeour	07 533 3681	027 533 3681	margaret.scrimgeour@ruralwomen.org.nz
6	Shirley Read (Taranaki)	06 752 3698	027 665 9047	sdread@xtra.co.nz
6	Judy Board (Greater Waikato)	07 872 4828	027 365 0998	judy.board@xtra.co.nz
7	Pauline Hilliam-Olsen	09 439 0006	027 270 5760	pauline.hilliam@xtra.co.nz

Proudly supporting
rural businesses

as Premier Partner of the 2019 NZI Rural Women
NZ Business Awards.



NZI is one of New Zealand's largest and most well-known insurance brands. We've been quietly helping Kiwis through good times and bad for over 160 years, with comprehensive insurance services for rural businesses.

Talk to your broker about NZI.

nzi.co.nz



NZ6664/2 05/19



Ngā Wāhine Taiwhenua o Aotearoa

Rural Women New Zealand National Office 04 473 5524
Level 5, 86 Victoria Street, Wellington 6011
PO Box 12-021, Thorndon, Wellington 6144
www.ruralwomen.org.nz 0800 256 467

© 2018. Rural Women New Zealand Inc (and subsequent years) All rights reserved. This publication is entitled to the full protection given by the Copyright Act 1994 to the holders of the copyright. Reproduction of all or any substantial parts of the publication is in breach of the copyright of the publisher Rural Women New Zealand Inc. This copyright extends to all forms of photocopying and any storing of material in any kind of information retrieval system. All applications for reproduction in any form should be made to the publishers – Rural Women New Zealand Inc.